

MODEL KSF

BELT DRIVE CENTRIFUGAL FILTERED SUPPLY FAN



MODEL FEATURES

- Supply air to over 12,000 CFM in static pressure capabilities to 2"
- Heavy-galvanized construction
- Belt drives permit easy performance adjustments when needed
- Forward curved centrifugal blower for efficient air flow at low sound levels
- Filters are washable and reusable
- AMCA Air and Sound Licensed
- cULus 705 Listed

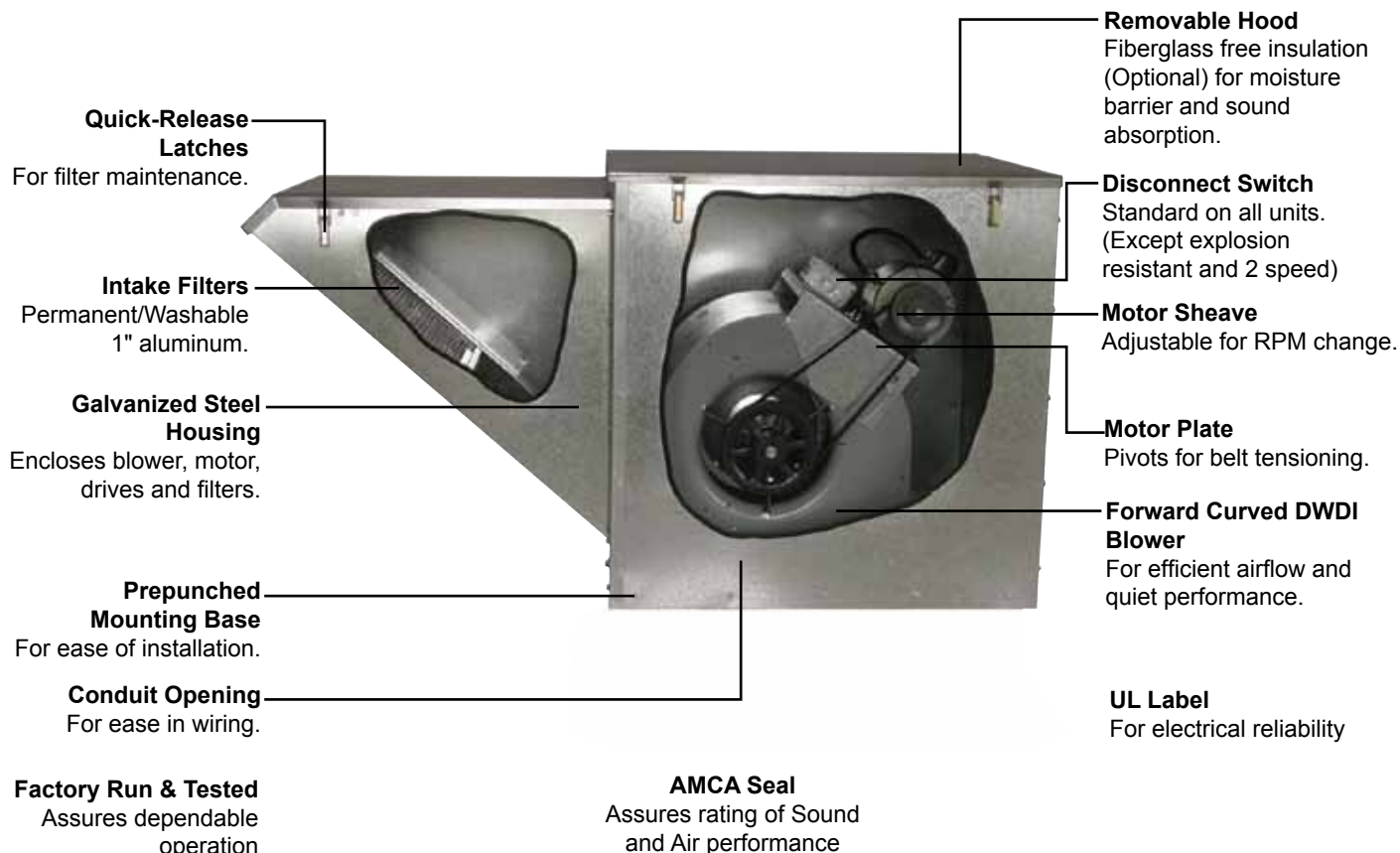
MODEL OVERVIEW

Model KSF fans are roof curb or curb cap mounted filtered supply fans rated from 375 to over 12,000 CFM, with static pressure capabilities to 2". They are specifically designed for filtered make-up air in kitchen hood applications. Model KSF's rugged design with heavy-gauge galvanized construction provides maximum weather protection, long life and the utmost in performance efficiency. The forward curved centrifugal blower provides efficient air flow at low sound levels with static pressure capabilities to handle ducted air systems or hoods within a building. The filters are washable and are reusable to reduce maintenance costs. Quick release hood latches make routine cleaning and maintenance fast and easy.

Model KSF is available in our Quickship program. Sizes 9-18 are available for next day or 3-day shipping from stock.



CONSTRUCTION FEATURES AND OPTIONS



Industry best 5 year fan housing warranty, 1 year motor warranty

All specifications are subject to change without notice unless approved in submittal by JencoFan.



CONSTRUCTION/SPECIFICATION CHECKLIST

Blower

- Statically and dynamically balanced forward curved wheel.
- 12-gauge galvanized steel blower plate/discharge opening.
- 18-gauge galvanized steel housing.
- Prepunched mounting holes.
- Conduit opening for wiring from below unit.

Motors

- 1 year warranty.
- Brands are nationally recognized and locally serviced.
- Single speed open drip-proof are standard.
- Explosion-proof, totally enclosed and two-speed motors are available.
- All motors are rated for continuous duty.
- 182T and larger motors shipped unmounted for field installation.
- Disconnect switch standard with single speed drip-proof and totally enclosed motors.

Hood

- Heavy-gauge galvanized steel hood.
- Quick-release latches for removal from housing.
- 1 inch washable aluminum mesh filters.

Drives

- Adjustable motor pulleys are standard.
- Sized for minimum 150% of drive horsepower.
- Machined cast iron adjustable motor pulleys.
- Pivoting motor plate for belt tensioning.
- Nonstatic oil resistant V-belts.

Certifications

- AMCA Air and Sound Licensed.
- cULus Standard 705 Listed Power Roof Ventilator label assures electrical reliability.
- cULus label must be specified when needed.



OPTIONS/ACCESSORIES

Insulated Hood: High performance and ecologically friendly fiberglass free insulation only.

Intake Extension: Extensions are available for all size KSF fans to provide NFPA required clearance from the exhaust fan on factory supplied common curbs. Extensions are made from heavy-gauge galvanized steel and require equipment supports on the intake end.

Roof Curb: Prefabricated heavy-gauge galvanized steel, welded construction, 12" high with 1-1/2" wood nailer. Options include single and double pitch construction and additional curb heights.



Motor Operated Damper: Motor operated aluminum damper for positive closure against backdraft (counter balanced).



Automatic Damper: Automatic aluminum damper for ease in installation and effective backdraft protection (counter balanced).

Duct Adapter: For ease in connecting discharge duct to fan outlet.

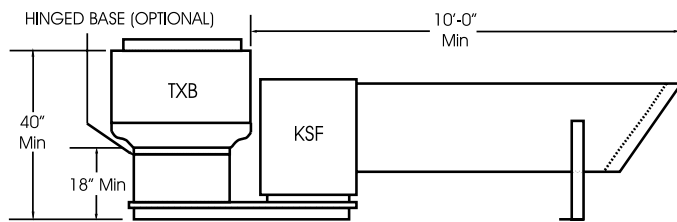
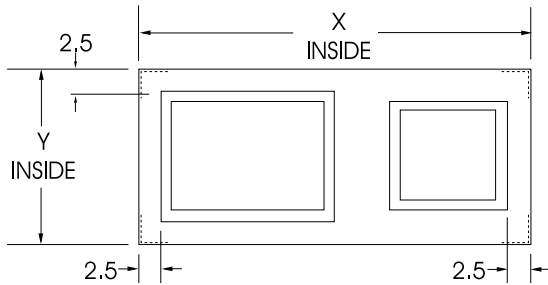
Common Curb: Designed to allow both the supply fan and exhaust fan to be mounted on the same curb. This curb requires only one roof opening and speeds installation time.

Special Coatings: Available coatings include: Synthetic Resin, Epoxy, and Heresite (air-dried phenolic). Contact your representative or the factory for more information on available coatings and colors.

NFPA96 INSTALLATION AND COMMON CURB ADAPTOR

Typical Installation

NFPA96 requires a 10 foot minimum distance between the exhaust fan and supply fan intake. The intake extension (optional) provides this clearance. Also required are hinged curb caps on the exhaust fan and some areas require a vented curb extension.



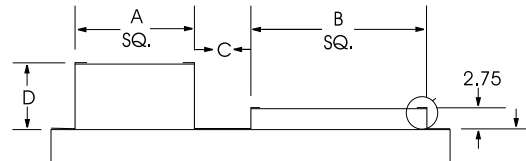
NFPA96 Alternate Installation

Where space limitations absolutely prevent a 10 foot separation from the air intake, a vertical separation may be permitted with the exhaust outlet being a minimum of 3 feet above any air intake located within 10 feet horizontally.

Important: Always check with the authority having jurisdiction to verify local codes and requirements.

Common Curb and Adaptor

The common curb and adaptor allows for mounting both the exhaust fan and supply fans onto one roof opening. Follow the chart below for sizing and ordering common curbs and adaptors.

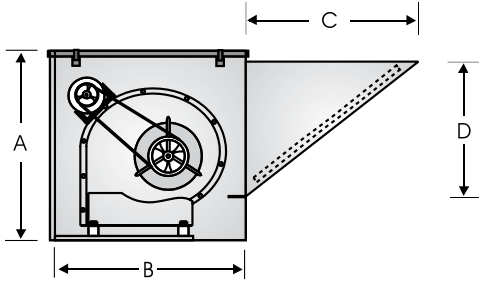


Common Curb Adaptor

MODEL		STOCK NO. 8" HIGH COMMON CURB	COMMON CURB L x W OD	STOCK NO. CURB CAP ADAPTOR	CURB CAP ADAPTOR X x Y OD	CURB CAP OPENING	
TXB	KSF					EXHAUST FAN OUTLET A Sq	SUPPLY FAN OUTLET B Sq
8/10	9	2302.BC10X9	55-3/4 x 27-1/2	2302.BA10X9	56-3/4 x 29	14-3/4	23-3/4
12	9	2302.BC12X9	59-1/4 x 27-1/2	2302.BA12X9	60-3/4 x 29	22-1/4	23-3/4
15/16	10	2302.BC15X10	65 x 31-1/4	2302.BA15X10	66-1/2 x 32-3/4	22-1/4	27-3/4
15/16	12	2302.BC15X12	69 x 35-1/4	2302.BA15X12	70-1/4 x 36-3/4	22-1/4	31-3/4
15/16	15	2302.BC15X15	69 x 35-1/4	2302.BA15X15	70-1/4 x 36-3/4	22-1/4	31-3/4
18	12	2302.BC18X12/15	74-1/2 x 35-1/4	2302.BA18X12	76 x 36-3/4	27-3/4	31-3/4
18	15	2302.BC18X12/15	74-1/2 x 35-1/4	2302.BA18X15	76 x 36-3/4	27-3/4	31-3/4
20	12	2302.BC20X12	74-1/2 x 35-1/4	2302.BA20X12	76 x 36-3/4	27-3/4	31-3/4
20	15	2302.BC20X15	74-1/2 x 35-1/4	2302.BA20X15	76 x 36-3/4	27-3/4	31-3/4
24	15	2302.BC24X15	82-1/2 x 38-1/2	2302.BA24X15	84 x 40	33-3/4	31-3/4
24	18	2302.BC24X18	86-1/2 x 39-1/4	2302.BA24X18	88 x 40-3/4	33-3/4	35-3/4
30	18	2302.BC30X18	94-1/2 x 45-3/4	2302.BA30X18	96 x 47-1/4	40-3/4	35-3/4
30	20	2302.BC30X20	108-1/2 x 54-1/4	2302.BA30X20	110 x 55-3/4	40-3/4	50-1/4
36	20	2302.BC36X20	113-1/2 x 54-1/4	2302.BA36X20	115 x 55-3/4	40-3/4	50-1/4

PERFORMANCE/DIMENSIONS

KSF9



Damper OD	Roof Opening	Curb OD	Curb Cap ID	A	B	C	D	Ship Wt
16	19-1/2	22-3/4	24	23-1/4	24	17-1/2	18	215



JencoFan, Div. of Soler & Palau Ventilation Group, certifies that the Models KSF shown herein are licensed to bear the AMCA Seal. The ratings shown are based on test and procedures performed in accordance with AMCA Publication 211 and AMCA Publication 311 and comply with the requirement of the AMCA Certified Ratings Program.

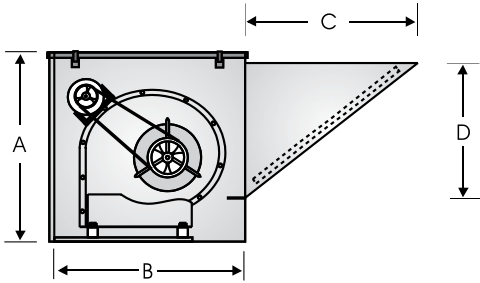
HP	CFM	OV	1/8 SP		1/4 SP		3/8 SP		1/2 SP		5/8 SP		3/4 SP		1 SP		1-1/4 SP		1-1/2 SP		2 SP		HP	
			RPM	BHP	RPM	BHP	RPM	BHP	RPM	BHP	RPM	BHP	RPM	BHP	RPM	BHP	RPM	BHP	RPM	BHP	RPM	BHP		
1/4	375	458	437	0.02																				
	475	580	453	0.03																				
	575	702	482	0.04	623	0.06																		
	675	825	519	0.05	642	0.08																		
	775	947	558	0.07	669	0.10	775	0.13																
	875	1069	598	0.09	704	0.12	798	0.15																
	975	1191	642	0.12	742	0.15	828	0.18	912	0.22	995	0.26												
	1075	1313	689	0.15	780	0.19	864	0.22	940	0.26	1016	0.30	1092	0.34										
	1175	1435	738	0.19	820	0.23	901	0.27	973	0.31	1043	0.35	1113	0.39	1250	0.49								
	1275	1558	789	0.24	862	0.28	939	0.32	1010	0.36	1075	0.41	1139	0.45	1267	0.55								
1/3	1375	1680	839	0.29	906	0.33	979	0.38	1047	0.42	1110	0.47	1170	0.52	1289	0.62	1407	0.73						
1/2	1475	1802	891	0.35	953	0.40	1020	0.44	1086	0.49	1147	0.54	1205	0.59	1316	0.70	1427	0.81	1536	0.93				
	1575	1924	943	0.42	1002	0.47	1062	0.52	1126	0.57	1185	0.62	1242	0.67	1347	0.79	1451	0.90	1554	1.02				
	1675	2046	995	0.50	1051	0.55	1106	0.60	1166	0.66	1224	0.71	1279	0.77	1381	0.88	1479	1.00	1577	1.13	1769	1.40	1-1/2	
3/4	1775	2168	1048	0.59	1101	0.65	1152	0.70	1207	0.75	1264	0.81	1318	0.87	1417	0.99	1510	1.11	1603	1.25	1789	1.52	2	
1875	2290	1100	0.69	1152	0.75	1200	0.80	1250	0.86	1304	0.92	1357	0.98	1455	1.10	1545	1.23	1632	1.37	1807	1.66			
1	1975	2413	1153	0.80	1203	0.86	1249	0.92	1296	0.98	1346	1.04	1397	1.11	1493	1.23	1581	1.37	1665	1.51	1831	1.80	2	
	2075	2535	1206	0.92	1254	0.99	1299	1.05	1343	1.11	1389	1.17	1437	1.24	1531	1.38	1619	1.51	1700	1.65	1858	1.96		
1-1/2	2175	2657	1259	1.06	1306	1.12	1349	1.19	1391	1.25	1433	1.32	1479	1.39	1571	1.53	1656	1.67	1736	1.81				
	2275	2779	1313	1.20	1358	1.27	1400	1.34	1440	1.41	1480	1.47	1522	1.54	1611	1.70	1695	1.84	1774	1.99				
	2375	2901	1366	1.36	1410	1.43	1451	1.50	1489	1.57	1528	1.64	1566	1.72	1651	1.87	1734	2.03	1811	2.18				

Power ratings (BHP) do not include transmission losses. Performance certified is for installation type B-free inlet, ducted outlet. Performance ratings do not include the effects of appurtenances (accessories).

Sound Power Levels in Decibels										
RPM	SP	LWo-1	LWo-2	LWo-3	LWo-4	LWo-5	LWo-6	LWo-7	LWo-8	LWo-A
500	0.125	73	69	60	54	51	49	45	38	59
600	0.125	76	76	66	60	57	55	52	44	65
700	0.125	78	82	72	65	62	59	58	51	71
700	0.250	79	80	71	63	60	57	56	48	69
800	0.125	80	85	77	69	66	63	62	56	75
800	0.250	81	83	76	68	64	61	60	53	73
900	0.125	82	87	81	73	69	67	66	61	78
900	0.250	83	86	81	72	68	65	64	58	77
1000	0.125	85	88	85	77	72	70	68	65	81
1000	0.250	84	88	85	76	71	68	67	63	80
1000	0.500	85	88	84	75	69	66	64	60	79
1100	0.250	85	89	88	79	74	71	69	66	83
1100	0.500	87	89	87	78	72	69	67	63	82
1200	0.125	88	92	92	83	77	75	73	71	87
1200	0.500	88	91	90	82	75	72	70	67	85
1300	0.250	89	92	95	85	79	76	74	73	89
1300	1.000	90	93	93	84	76	73	71	68	87
1400	0.500	90	93	97	87	80	77	74	73	91
1500	1.000	92	95	97	89	80	77	74	73	92
1600	1.500	93	96	98	91	82	79	76	74	93

The sound power level ratings shown are in decibels referred to 10-12 watts calculated per AMCA Standard 301. The A-weighted sound ratings shown have been calculated per AMCA Standard 301. Values shown are for outlet Lwo sound power levels for: Installation Type-B: free inlet, ducted outlet. Ratings include the effects of duct end connection.

KSF10



Damper OD	Roof Opening	Curb OD	Curb Cap ID	A	B	C	D	Ship Wt
20	23-1/2	26-1/2	28	27-1/4	28	22.5	21	245



JencoFan, Div. of Soler & Palau Ventilation Group, certifies that the Models KSF shown herein are licensed to bear the AMCA Seal. The ratings shown are based on test and procedures performed in accordance with AMCA Publication 211 and AMCA Publication 311 and comply with the requirement of the AMCA Certified Ratings Program.

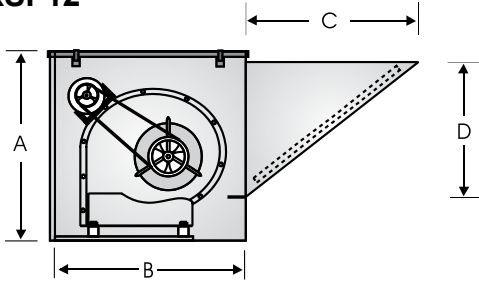
HP	CFM	OV	1/8 SP		1/4 SP		3/8 SP		1/2 SP		5/8 SP		3/4 SP		1 SP		1-1/4 SP		1-1/2 SP		2 SP		HP
			RPM	BHP	RPM	BHP	RPM	BHP	RPM	BHP	RPM	BHP	RPM	BHP	RPM	BHP	RPM	BHP	RPM	BHP	RPM	BHP	
1/4	1050	1011	509	0.10	610	0.13	696	0.17															
	1150	1108	537	0.12	633	0.15	717	0.20															
	1250	1204	565	0.14	658	0.18	739	0.23	811	0.27													
	1350	1300	595	0.17	684	0.22	762	0.26	832	0.31	897	0.36											
	1450	1397	626	0.20	711	0.26	785	0.30	855	0.35	918	0.40	977	0.45									
1/3	1650	1589	689	0.28	766	0.34	836	0.40	901	0.45	962	0.51	1019	0.57	1124	0.68							
	1750	1686	721	0.33	794	0.39	863	0.45	926	0.51	985	0.57	1041	0.63	1143	0.75							
1/2	1850	1782	753	0.38	824	0.45	891	0.52	954	0.57	1009	0.63	1063	0.70	1164	0.83	1257	0.93					
	1950	1878	786	0.44	854	0.51	918	0.58	978	0.64	1033	0.70	1087	0.77	1186	0.91	1277	1.05	1364	1.19			
	2050	1975	819	0.50	885	0.58	946	0.65	1005	0.72	1059	0.78	1111	0.85	1208	1.00	1298	1.14	1382	1.28			
3/4	2150	2071	852	0.57	916	0.65	975	0.73	1032	0.81	1085	0.87	1135	0.93	1231	1.09	1319	1.24	1402	1.39			
	2250	2167	886	0.65	948	0.73	1004	0.81	1060	0.89	1112	0.97	1161	1.03	1254	1.18	1342	1.35	1422	1.50			
	2350	2264	921	0.73	980	0.81	1034	0.90	1088	0.99	1139	1.07	1187	1.14	1278	1.29	1364	1.46	1444	1.62	1592	1.95	2
1	2450	2360	955	0.82	1012	0.91	1065	0.99	1116	1.09	1167	1.18	1214	1.26	1303	1.40	1387	1.57	1466	1.75	1612	2.09	3
	2550	2456	990	0.92	1044	1.01	1096	1.10	1145	1.19	1194	1.29	1241	1.38	1328	1.52	1411	1.70	1489	1.88	1632	2.24	
1-1/2	2650	2552	1025	1.03	1076	1.12	1128	1.21	1175	1.31	1222	1.41	1269	1.51	1354	1.66	1435	1.83	1512	2.02	1654	2.40	3
	2750	2649	1060	1.15	1109	1.23	1159	1.33	1205	1.43	1251	1.53	1296	1.64	1381	1.81	1459	1.97	1535	2.16	1675	2.56	
	2850	2745	1096	1.27	1142	1.36	1191	1.46	1236	1.56	1280	1.66	1324	1.77	1407	1.97	1485	2.13	1559	2.32	1698	2.73	
	2950	2841	1131	1.40	1175	1.49	1224	1.59	1267	1.70	1310	1.81	1353	1.92	1435	2.13	1511	2.30	1583	2.48			
2	3050	2938	1167	1.55	1209	1.63	1255	1.74	1299	1.85	1340	1.96	1381	2.07	1462	2.30	1537	2.48	1608	2.66			

Power ratings (BHP) do not include transmission losses. Performance certified is for installation type B-free inlet, ducted outlet. Performance ratings do not include the effects of appurtenances (accessories).

Sound Power Levels in Decibels										
RPM	SP	LW _o -1	LW _o -2	LW _o -3	LW _o -4	LW _o -5	LW _o -6	LW _o -7	LW _o -8	LW _o -A
600	0.125	78	76	67	66	64	62	61	55	70
700	0.125	80	82	71	70	68	66	66	60	75
700	0.250	79	81	69	68	66	64	64	57	73
800	0.125	82	85	76	74	72	70	69	65	78
800	0.250	82	84	75	72	70	68	68	63	77
900	0.125	85	87	81	77	75	73	72	68	81
900	0.250	84	87	80	76	74	72	71	68	81
900	0.500	84	85	78	73	71	69	68	64	78
1000	0.125	86	89	85	79	78	76	75	72	84
1000	0.250	86	89	84	79	77	75	74	71	84
1000	0.500	86	88	83	76	75	73	72	68	82
1100	0.125	88	91	87	82	80	78	77	75	87
1100	0.250	88	91	88	81	80	78	76	74	86
1100	0.500	88	90	87	79	78	76	75	72	85
1200	0.500	89	92	92	82	81	79	77	76	88
1200	1.000	88	91	88	79	77	75	73	71	85
1300	1.000	90	93	92	82	80	79	77	76	88
1400	1.000	92	94	96	84	83	81	79	79	91
1400	1.500	91	94	93	82	80	78	76	74	88
1500	1.500	92	95	96	85	83	81	79	78	91

The sound power level ratings shown are in decibels referred to 10-12 watts calculated per AMCA Standard 301. The A-weighted sound ratings shown have been calculated per AMCA Standard 301. Values shown are for outlet Lwo sound power levels for: Installation Type-B: free inlet, ducted outlet. Ratings include the effects of duct end connection.

KSF12



Damper OD	Roof Opening	Curb OD	Curb Cap ID	A	B	C	D	Ship Wt
24	28	30-1/2	32	32-1/2	32	26-3/4	26-3/8	255



JencoFan, Div. of Soler & Palau Ventilation Group, certifies that the Models KSF shown herein are licensed to bear the AMCA Seal. The ratings shown are based on test and procedures performed in accordance with AMCA Publication 211 and AMCA Publication 311 and comply with the requirement of the AMCA Certified Ratings Program.

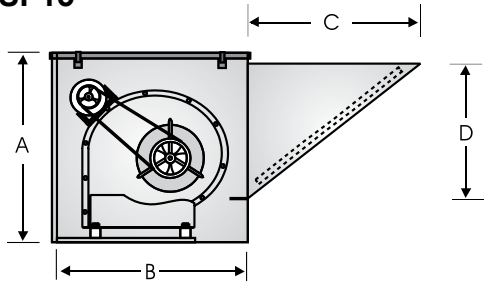
HP	CFM	OV	1/8 SP		1/4 SP		3/8 SP		1/2 SP		5/8 SP		3/4 SP		1 SP		1-1/4 SP		1-1/2 SP		2 SP	
			RPM	BHP	RPM	BHP	RPM	BHP	RPM	BHP	RPM	BHP	RPM	BHP	RPM	BHP	RPM	BHP	RPM	BHP	RPM	BHP
1/4	1150	1668	394	0.07	498	0.10	590	0.14	673	0.18	747	0.23	814	0.28	932	0.38	1034	0.49	1125	0.61	1284	0.85
	1350	1958	427	0.09	519	0.13	604	0.17	683	0.22	755	0.27	822	0.32	941	0.44	1045	0.55	1138	0.68	1301	0.94
	1600	2320	473	0.14	553	0.18	629	0.23	701	0.28	769	0.33	833	0.39	951	0.51	1055	0.64	1150	0.78	1316	1.07
	1800	2610	512	0.19	586	0.23	655	0.28	721	0.33	785	0.39	846	0.45	960	0.58	1063	0.72	1158	0.86	1326	1.17
	2000	2900	552	0.25	620	0.30	684	0.35	746	0.40	805	0.46	863	0.53	971	0.66	1072	0.80	1166	0.96	1334	1.28
1/3	2200	3190	594	0.32	657	0.37	716	0.43	773	0.49	829	0.55	883	0.61	986	0.75	1084	0.90	1175	1.06	1342	1.40
1/2	2400	3480	636	0.40	695	0.46	751	0.52	804	0.58	856	0.65	907	0.71	1005	0.86	1098	1.02	1187	1.18	1350	1.54
	2600	3770	679	0.49	735	0.56	787	0.62	837	0.69	886	0.76	934	0.83	1026	0.98	1115	1.14	1200	1.31	1360	1.68
3/4	2700	3915	701	0.55	755	0.62	806	0.68	855	0.75	902	0.82	948	0.89	1038	1.05	1125	1.21	1209	1.39	1366	1.76
	2800	4060	723	0.61	776	0.68	825	0.75	872	0.82	918	0.89	963	0.96	1051	1.12	1135	1.29	1217	1.46	1372	1.84
	2900	4205	744	0.67	796	0.74	844	0.81	890	0.89	935	0.96	979	1.04	1064	1.20	1146	1.37	1227	1.54	1379	1.93
	3000	4350	767	0.73	817	0.81	864	0.88	909	0.96	952	1.04	995	1.11	1078	1.28	1159	1.45	1237	1.63	1386	2.02
1	3100	4495	789	0.80	838	0.88	883	0.96	927	1.04	970	1.12	1011	1.20	1092	1.36	1171	1.54	1247	1.72	1394	2.12
	3200	4640	811	0.88	859	0.96	903	1.04	946	1.12	988	1.20	1028	1.28	1107	1.45	1184	1.63	1259	1.82	1403	2.22
	3400	4930	855	1.04	901	1.13	944	1.21	985	1.30	1024	1.38	1063	1.47	1138	1.65	1211	1.83	1283	2.03	1421	2.44
1-1/2	3600	5220	900	1.23	944	1.32	985	1.41	1024	1.50	1062	1.59	1099	1.68	1171	1.86	1241	2.05	1310	2.25	1442	2.68
	3800	5510	945	1.43	987	1.53	1027	1.63	1064	1.72	1101	1.81	1136	1.91	1205	2.10	1272	2.30	1338	2.51	1466	2.94
2	4000	5800	990	1.66	1031	1.76	1069	1.86	1105	1.96	1140	2.06	1174	2.16	1241	2.36	1305	2.57	1368	2.78	1491	3.23
	4200	6090	1036	1.91	1075	2.02	1111	2.12	1146	2.23	1180	2.33	1213	2.44	1277	2.65	1339	2.86	1400	3.08	1518	3.54
3	4400	6380	1081	2.18	1119	2.30	1154	2.41	1188	2.52	1221	2.63	1252	2.74	1314	2.96	1374	3.18	1433	3.41	1547	3.88
	4600	6670	1127	2.48	1163	2.60	1197	2.72	1230	2.84	1262	2.95	1292	3.07	1352	3.30	1410	3.53	1467	3.76	1577	4.25

Power ratings (BHP) do not include transmission losses. Performance certified is for installation type B-free inlet, ducted outlet. Performance ratings do not include the effects of appurtenances (accessories).

Sound Power Levels in Decibels										
RPM	SP	LWo-1	LWo-2	LWo-3	LWo-4	LWo-5	LWo-6	LWo-7	LWo-8	LWo-A
400	0.125	70	62	60	54	53	52	44	36	59
500	0.125	77	71	68	64	61	60	54	47	67
500	0.250	75	69	66	62	58	57	51	43	65
600	0.125	83	79	73	71	67	66	62	55	74
600	0.250	80	76	70	68	63	62	58	50	70
700	0.125	87	84	78	77	71	70	68	61	79
700	0.250	85	82	76	75	69	68	65	58	77
700	0.500	83	80	74	73	66	65	62	54	74
800	0.125	90	89	81	80	74	73	72	65	82
800	0.250	89	88	80	78	73	72	71	64	81
800	0.500	86	85	77	75	69	68	67	59	78
900	0.125	93	92	85	82	78	76	75	69	85
900	0.250	92	91	84	82	77	75	74	68	85
900	0.500	89	89	82	79	74	72	71	64	82
1000	0.0125	95	95	89	85	82	79	78	73	88
1000	0.250	94	94	88	85	81	78	77	72	88
1000	0.500	92	92	86	83	79	76	75	69	86
1000	1.000	90	90	84	81	77	73	72	66	84
1100	1.000	92	93	87	83	80	76	75	69	86
1200	1.500	93	95	90	85	83	78	77	72	89

The sound power level ratings shown are in decibels referred to 10-12 watts calculated per AMCA Standard 301. The A-weighted sound ratings shown have been calculated per AMCA Standard 301. Values shown are for outlet Lwo sound power levels for: Installation Type-B: free inlet, ducted outlet. Ratings include the effects of duct end connection.

KSF15



Damper OD	Roof Opening	Curb OD	Curb Cap ID	A	B	C	D	Ship Wt
24	28	30-1/2	32	37-1/4	32-1/2	32	31-1/2	310



JencoFan, Div. of Soler & Palau Ventilation Group, certifies that the Models KSF shown herein are licensed to bear the AMCA Seal. The ratings shown are based on test and procedures performed in accordance with AMCA Publication 211 and AMCA Publication 311 and comply with the requirement of the AMCA Certified Ratings Program.

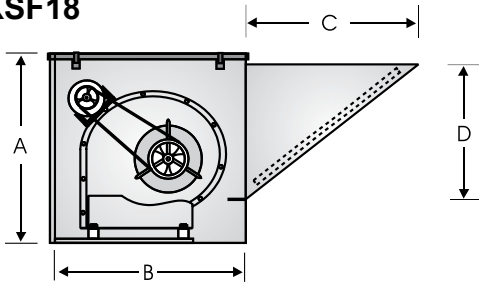
HP	CFM	OV	1/8 SP		1/4 SP		3/8 SP		1/2 SP		5/8 SP		3/4 SP		1 SP		1-1/4 SP		1-1/2 SP		2 SP		HP
			RPM	BHP	RPM	BHP	RPM	BHP	RPM	BHP	RPM	BHP	RPM	BHP	RPM	BHP	RPM	BHP	RPM	BHP	RPM	BHP	
1/4	1625	814	349	0.10																			
	2025	1014	396	0.16																			
	2425	1215	448	0.25	464	0.21																	
1/3	2825	1415	501	0.36	508	0.31	563	0.38	616	0.44													
1/2	3230	1618	557	0.52	607	0.60	652	0.69	695	0.77	737	0.86	777	0.95									
3/4	3640	1824	615	0.72	661	0.81	703	0.91	743	1.01	781	1.10	817	1.20	889	1.39	959	1.60					
1	3840	1924	644	0.83	688	0.93	728	1.03	767	1.14	803	1.24	839	1.34	907	1.54	974	1.75					
	4045	2026	673	0.96	716	1.06	755	1.17	792	1.28	827	1.39	862	1.49	928	1.70	992	1.92	1055	2.15			
	4245	2127	702	1.10	743	1.21	781	1.32	817	1.43	851	1.55	885	1.66	948	1.88	1010	2.11	1071	2.34			
1-1/2	4445	2227	731	1.25	771	1.36	808	1.48	842	1.60	876	1.72	908	1.84	970	2.07	1029	2.30	1088	2.54			
	4645	2327	760	1.42	799	1.54	834	1.65	868	1.78	901	1.90	932	2.03	992	2.27	1050	2.51	1106	2.76	1216	2.28	
	4850	2430	790	1.61	828	1.73	862	1.85	895	1.98	927	2.11	957	2.24	1015	2.49	1071	2.75	1126	3.00	1232	3.54	
2	5050	2530	820	1.81	856	1.93	890	2.05	922	2.19	952	2.32	982	2.46	1039	2.73	1093	2.99	1146	3.25	1249	3.80	
	5200	2605	842	1.96	877	2.09	910	2.22	942	2.35	972	2.49	1001	2.63	1057	2.91	1110	3.18	1162	3.45	1262	4.01	5
	5400	2705	871	2.19	906	2.32	938	2.45	968	2.59	998	2.74	1026	2.88	1081	3.17	1133	3.45	1183	3.73	1280	4.31	
3	5600	2805	901	2.43	934	2.56	966	2.70	996	2.85	1024	2.99	1052	3.14	1105	3.45	1156	3.74	1205	4.03	1300	4.62	
	5800	2906	931	2.69	963	2.83	994	2.97	1023	3.12	1051	3.27	1078	3.43	1130	3.74	1180	4.05	1228	4.35	1320	4.96	
	6000	3006	961	2.97	992	3.11	1022	3.26	1050	3.41	1078	3.57	1104	3.72	1155	4.05	1204	4.37	1251	4.68			
5	6400	3206	1020	3.58	1050	3.73	1079	3.89	1106	4.05	1132	4.21	1157	4.38	1206	4.72							
	6800	3407	1080	4.28	1109	4.44	1136	4.60	1162	4.77	1187	4.94											
	7100	3557	1126	4.86	1153	5.02																	

Power ratings (BHP) do not include transmission losses. Performance certified is for installation type B-free inlet, ducted outlet. Performance ratings do not include the effects of appurtenances (accessories).

Sound Power Levels in Decibels										
RPM	SP	LWo-1	LWo-2	LWo-3	LWo-4	LWo-5	LWo-6	LWo-7	LWo-8	LWo-A
450	0.125	71	66	66	65	64	63	57	50	69
550	0.125	79	71	71	71	69	69	65	58	75
550	0.250	78	70	69	69	67	66	62	55	73
650	0.125	85	74	75	76	74	74	72	64	80
750	0.125	88	80	78	79	78	77	76	70	84
750	0.250	88	80	77	78	76	76	74	68	82
750	0.500	87	79	75	76	74	74	71	64	80
850	0.125	90	85	80	82	81	80	79	74	87
850	0.250	90	84	80	81	80	79	78	73	86
850	0.500	89	84	79	80	78	78	76	70	84
950	0.125	92	89	83	84	84	83	82	78	90
950	0.250	92	89	83	83	83	82	81	77	89
950	0.500	92	88	82	82	82	81	79	75	86
950	1.000	91	88	81	80	79	78	76	70	85
1050	0.125	94	93	85	86	86	85	85	81	92
1050	0.250	94	93	85	86	86	85	84	80	92
1050	0.500	94	92	84	85	85	83	83	79	90
1050	1.000	93	92	84	83	83	81	80	75	88
1150	1.000	95	95	86	85	86	84	83	79	91
1150	1.500	94	95	86	84	84	82	81	76	90

The sound power level ratings shown are in decibels referred to 10-12 watts calculated per AMCA Standard 301. The A-weighted sound ratings shown have been calculated per AMCA Standard 301. Values shown are for outlet Lwo sound power levels for: Installation Type-B: free inlet, ducted outlet. Ratings include the effects of duct end connection.

KSF18



Damper OD	Roof Opening	Curb OD	Curb Cap ID	A	B	C	D	Ship Wt
27	32	34-5/8	36	41-1/4	36	35-1/2	35-1/2	350



JencoFan, Div. of Soler & Palau Ventilation Group, certifies that the Models KSF shown herein are licensed to bear the AMCA Seal. The ratings shown are based on test and procedures performed in accordance with AMCA Publication 211 and AMCA Publication 311 and comply with the requirement of the AMCA Certified Ratings Program.

HP	CFM	OV	1/8 SP		1/4 SP		3/8 SP		1/2 SP		5/8 SP		3/4 SP		1 SP		1-1/4 SP		1-1/2 SP		2 SP		HP
			RPM	BHP	RPM	BHP	RPM	BHP	RPM	BHP	RPM	BHP	RPM	BHP	RPM	BHP	RPM	BHP	RPM	BHP	RPM	BHP	
1/4	2350	830	320	0.16																			
	2450	865	327	0.17																			
	2650	936	342	0.21	407	0.28																	
	2850	1006	358	0.24	420	0.32																	
1/3	3060	1081	375	0.29	434	0.37	487	0.47															
1/2	3575	1262	419	0.43	471	0.52	520	0.62	565	0.73													
3/4	4090	1444	465	0.6	511	0.71	556	0.83	598	0.94													
1	4600	1624	511	0.82	553	0.95	594	1.08	633	1.20	670	1.33											
	4850	1713	534	0.95	574	1.08	613	1.22	651	1.35	687	1.49	722	1.63									
1-1/2	5110	1804	559	1.10	597	1.24	634	1.38	670	1.52	705	1.66	739	1.80	802	2.11							
	5360	1893	583	1.25	619	1.40	655	1.54	689	1.69	723	1.84	756	1.99	818	2.30							
	5625	1986	608	1.43	643	1.58	677	1.74	710	1.89	743	2.05	774	2.20	835	2.52	891	2.87					
2	5875	2075	632	1.62	665	1.78	698	1.94	730	2.10	762	2.26	792	2.42	852	2.75	907	3.10					
	6130	2165	656	1.83	688	1.99	720	2.16	751	2.32	781	2.49	811	2.66	869	3.00	923	3.36	974	3.73			
	6380	2253	680	2.04	711	2.21	742	2.39	772	2.56	801	2.74	830	2.91	886	3.27	939	3.63	999	4.01			
3	6645	2646	706	2.29	736	2.47	765	2.65	794	2.83	822	3.01	850	3.20	905	3.56	957	3.94	1006	4.33			
	7150	2525	755	2.83	783	3.02	811	3.21	838	3.40	864	3.60	890	3.80	942	4.19	992	4.59	1040	4.99	1129	5.85	
5	7650	2701	840	3.43	830	3.64	856	3.84	882	4.05	907	4.26	931	4.47	980	4.89	1028	5.31	1074	5.74	1161	6.63	7-1/2
	8150	2878	854	4.12	878	4.34	902	4.56	926	4.78	950	5.00	974	5.22	1020	5.67	1065	6.12	1109	6.57	1194	7.49	
	8650	3054	903	4.90	926	5.13	949	5.36	972	5.59	994	5.83	1017	6.06	1060	6.54	1103	7.01	1146	7.49			
7-1/2	9152	3232	953	5.77	974	6.01	996	6.26	1078	6.50	1039	6.75	1060	7.00	1102	7.50							

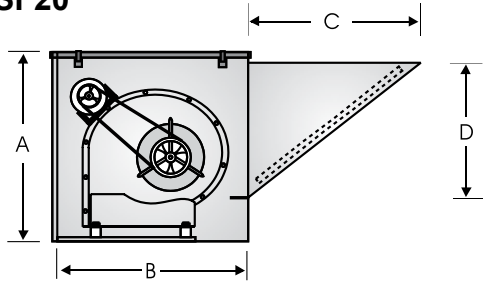
Power ratings (BHP) do not include transmission losses. Performance certified is for installation type B-free inlet, ducted outlet. Performance ratings do not include the effects of appurtenances (accessories).

Sound Power Levels in Decibels										
RPM	SP	LWo-1	LWo-2	LWo-3	LWo-4	LWo-5	LWo-6	LWo-7	LWo-8	LWo-A
400	0.125	68	66	68	67	66	62	57	51	70
500	0.125	77	72	73	73	72	70	65	60	77
500	0.250	75	70	71	71	70	68	62	56	75
600	0.125	84	77	77	78	77	76	71	66	82
600	0.250	82	75	76	77	75	74	69	64	81
600	0.500	79	72	73	75	72	71	66	59	77
700	0.125	89	80	80	82	81	81	76	71	86
700	0.250	88	79	79	81	80	79	75	70	85
700	0.500	86	77	78	80	77	77	72	66	83
800	0.125	91	85	83	85	84	84	81	75	90
800	0.250	91	84	82	84	83	83	79	74	89
800	0.500	89	83	81	83	82	81	77	72	87
900	0.125	94	90	86	87	87	87	84	79	93
900	0.250	93	89	85	87	87	86	83	78	92
900	0.500	92	88	84	86	85	84	82	76	91
900	1.000	89	85	82	84	83	82	78	73	88
1000	0.500	94	92	87	88	88	87	85	80	94
1000	1.000	92	90	85	86	86	85	83	77	91
1000	1.500	90	88	83	85	84	83	80	74	89
1100	1.500	93	92	86	87	88	86	84	79	93

The sound power level ratings shown are in decibels referred to 10-12 watts calculated per AMCA Standard 301. The A-weighted sound ratings shown have been calculated per AMCA Standard 301. Values shown are for outlet Lwo sound power levels for: Installation Type-B: free inlet, ducted outlet. Ratings include the effects of duct end connection.



KSF20



Damper OD	Roof Opening	Curb OD	Curb Cap ID	A	B	C	D	Ship Wt
42	46-1/2	49	51	49-1/4	51	40	35	650



JencoFan, Div. of Soler & Palau Ventilation Group, certifies that the Models KSF shown herein are licensed to bear the AMCA Seal. The ratings shown are based on test and procedures performed in accordance with AMCA Publication 211 and AMCA Publication 311 and comply with the requirement of the AMCA Certified Ratings Program.

HP	CFM	OV	1/8 SP		1/4 SP		3/8 SP		1/2 SP		5/8 SP		3/4 SP		1 SP		1-1/4 SP		1-1/2 SP		2 SP		HP
			RPM	BHP	RPM	BHP	RPM	BHP	RPM	BHP	RPM	BHP	RPM	BHP	RPM	BHP	RPM	BHP	RPM	BHP	RPM	BHP	
1/4	2800	724	230	0.15																			
	3200	827	245	0.20																			
1/3	3600	931	262	0.26	313	0.35	363	0.46															
	4000	1034	279	0.34	326	0.44	372	0.54	416	0.66													
1/2	4400	1138	298	0.43	341	0.54	383	0.65	424	0.77	464	0.90											
3/4	4800	1241	316	0.53	358	0.65	396	0.77	434	0.89	472	1.03	508	1.18									
	5200	1345	334	0.65	375	0.78	411	0.91	446	1.04	481	1.18	515	1.33									
	5500	1422	348	0.75	388	0.90	422	1.03	456	1.17	489	1.31	522	1.46	586	1.80							
1	5800	1500	362	0.86	402	1.02	435	1.16	466	1.30	498	1.45	529	1.60	591	1.94							
	6100	1577	377	0.98	415	1.15	447	1.30	478	1.45	508	1.60	538	1.76	597	2.10	654	2.48					
1-1/2	6400	1655	392	1.11	429	1.30	460	1.46	490	1.61	518	1.77	547	1.93	604	2.28	569	2.66					
	6700	1733	406	1.26	443	1.45	474	1.63	502	1.79	529	1.95	557	2.12	611	2.47	665	2.86					
	7000	1810	421	1.42	456	1.62	487	1.81	515	1.98	541	2.15	568	2.32	620	2.68	671	3.07	722	3.49			
2	7300	1888	437	1.59	470	1.79	501	2.00	528	2.18	553	2.36	579	2.54	629	2.90	679	3.30	728	3.72			
	7600	1965	452	1.78	484	1.99	515	2.21	541	2.40	566	2.58	599	2.77	639	3.15	686	3.54	734	3.97			
	7900	2043	467	1.99	498	2.20	528	2.43	554	2.63	579	2.83	602	3.02	649	3.41	695	3.81	741	4.24			
3	8200	2120	483	2.21	512	2.42	542	2.66	568	2.88	592	3.08	615	3.28	660	3.68	704	4.10	749	4.53	836	5.49	
	8800	2276	514	2.69	541	2.92	569	3.17	596	3.42	618	3.64	640	3.86	682	4.29	724	4.73	766	5.17	848	6.15	7-1/2
5	9400	2431	546	3.25	571	3.48	597	3.75	622	4.02	646	4.28	667	4.51	707	4.97	746	5.43	785	5.90	863	6.88	
	10000	2586	578	3.89	601	4.13	625	4.40	650	4.68	673	4.98	694	5.23	732	5.73	769	6.22	806	6.71	879	7.72	10
7-1/2	12000	3103	685	6.61	704	6.87	724	7.17	744	7.49	764	7.83	784	8.18	822	8.85	855	9.45	886	10.04			

Power ratings (BHP) do not include transmission losses. Performance certified is for installation type B-free inlet, ducted outlet. Performance ratings do not include the effects of appurtenances (accessories).

Sound Power Levels in Decibels										
RPM	SP	LWo-1	LWo-2	LWo-3	LWo-4	LWo-5	LWo-6	LWo-7	LWo-8	LWo-A
200	0.125	56	55	54	53	47	40	35	29	53
300	0.125	69	68	67	67	65	59	53	47	59
300	0.250	65	64	63	63	61	53	47	42	65
400	0.125	78	77	76	75	74	71	65	58	78
400	0.250	76	74	73	73	72	67	61	55	76
400	0.500	72	71	70	69	68	62	56	50	72
500	0.125	85	83	82	81	80	79	72	66	85
500	0.250	83	81	80	79	79	77	70	64	83
500	0.500	80	78	77	77	76	73	66	60	80
600	0.125	89	88	87	85	85	84	79	73	90
600	0.250	88	87	86	84	84	83	77	71	89
600	0.500	86	84	83	82	82	81	74	68	87
600	1.000	82	80	79	79	78	76	68	62	82
700	0.125	92	92	91	89	88	88	84	78	94
700	0.250	91	91	90	89	88	87	83	77	93
700	0.500	90	89	88	87	86	86	81	74	92
700	1.000	86	86	85	84	84	82	76	70	88
700	1.500	85	84	83	82	82	80	73	67	86
800	1.000	90	91	89	89	88	87	83	76	93
800	1.500	88	88	86.8	86	86	84	79	72	91

The sound power level ratings shown are in decibels referred to 10-12 watts calculated per AMCA Standard 301. The A-weighted sound ratings shown have been calculated per AMCA Standard 301. Values shown are for outlet Lwo sound power levels for: Installation Type-B: free inlet, ducted outlet. Ratings include the effects of duct end connection.