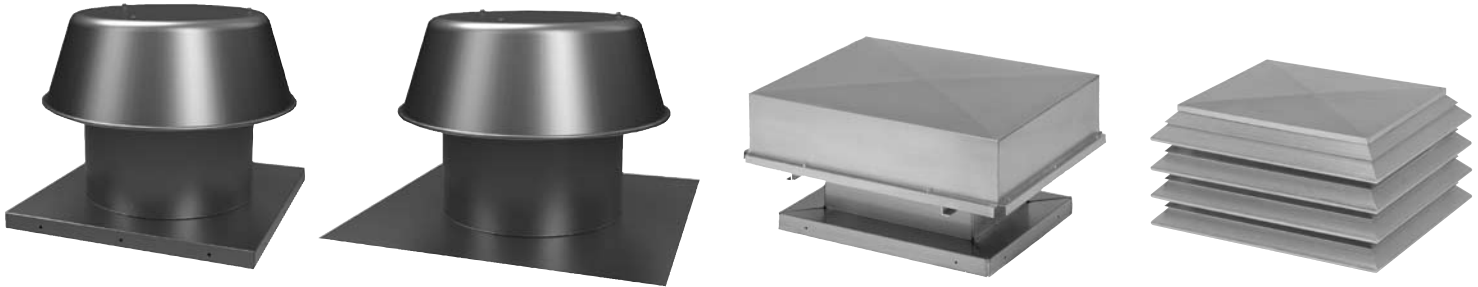


Gravity Ventilators

Models RCXII, RCXII-SF, BGH, RLX



Intake or Relief Non-Powered Ventilators





We began our tradition of quality in the 1940's as Jenn-Air, a family owned manufacturer of cooking ranges and commercial fans. It was Jenn-Air who pioneered the industry's first spun aluminum exhaust fans over 50 years ago! A strong commitment to providing quality products and a dedication to serving the industry and the community, quickly lead JencoFan to become the most respected name in the fan industry. In December 2004, JencoFan was acquired by Soler & Palau S.A., Barcelona, Spain.

With the addition of axial flow and propeller fan product lines, the JencoFan tradition of quality encompasses a total package of air movement products and services.



Today, our state of the art manufacturing technology and engineering, and an atmosphere that promotes imaginative thinking are enabling us to satisfy the industry demands for better products, better support - better value. JencoFan recently added 24,000 square feet to its manufacturing facility and opened a 65,000 square foot warehouse to make a combined 150,000 square feet of facilities. All this to better serve you.

We're proud of our tradition of quality at JencoFan and are anxious to share with you our dedication to excellence.



Outstanding Customer Service

JencoFan's worldwide network of well trained, professional sales representatives can provide product selections, technical and specification assistance, quotations, literature, software and after-the-sale support. Our order processing system helps your local representative place your order so it can be shipped to you as soon as next day. Our friendly sales staff is eager to assist you with all your ventilation needs, call our Customer Service Department directly at 866.779.7679.



Online Technical Support

From our website, www.jencofan.com, you can access our latest product and company news; product submittals; Installation, Operation, and Maintenance manuals and much more. Our state of the art Fan Selection Software, Optisizer 2 is an online Fan Selection and ordering program. Contact the factory or your local JencoFan Representative for more information.



TABLE OF CONTENTS

Gravity Ventilator Fan Sizing	3
RCXII & RCXII-SF Application and Construction.....	4
RCXII & RCXII-SF Dimensions	5
RCXII & RCXII-SF Performance.....	6
BGH Application and Construction	7
BGH Performance and Dimensions	8-13
RLX Application and Construction	14
RLX Performance and Dimensions	15-18
Limited Warranty	18
Additional Products.....	20

GRAVITY VENTILATOR FAN SIZING

The tables shown offer quick selections at common static pressure points. Selection choices vary widely due to field conditions and size choices. The following formulas are useful in making selections:

(A) Throat Area = $\frac{CFM}{Velocity}$

(B) Throat Velocity = $\frac{CFM}{Throat Area}$

(C) Velocity Pressure = $\left[\frac{Throat Velocity}{4005} \right]^2$

(D) Determine new static pressure when CFM is known:

$$SP_2 = SP_1 \times \left[\frac{CFM_2}{CFM_1} \right]^2$$

CFM₂ = Specified airflow

CFM₁ = Known CFM from table selection

SP₂ = Static pressure to be determined

SP₁ = Static pressure in table corresponding to CFM

(Ex.) Determine new unknown CFM when static pressure is known:

$$CFM_2 = CFM_1 \times \left[\frac{SP_2}{SP_1} \right]$$

CFM₂ = Unknown

CFM₁ = Catalog CFM

SP₂ = New static pressure where CFM is unknown

SP₁ = Known static pressure from known CFM (CFM₁)





RCXII/RCXII-SF - RELIEF/INTAKE VENTILATORS

JencoFan
A Tradition of Quality



RCXII (sizes 6-20)



RCXII (sizes 24-36)



RCXII-SF

JencoFan's RCXII and RCXII-SF relief or intake ventilators feature low contour spun aluminum hoods for an attractive appearance. They are designed to exhaust or supply air from or to an enclosed area without the need for a power operated fan. Available in two styles, these fans range in sizes from 6-36. The RCXII (curb) has a curb cap found on most roof ventilators and must be mounted on a roof curb (sold separately). Model RCXII-SF (self-flashing) has an extra wide, flat base that is installed under roof shingles and does not require a roof curb. Both styles come standard with a galvanized bird screen

Application

Model RCXII and RCXII-SF rely on a difference in static pressure inside and outside the area to create an airflow through the ventilator from the area of higher pressure to the area of lower pressure. If the enclosed area is under a negative pressure, air will flow into the enclosed area (intake). If the enclosed area has a positive pressure, air will flow from it to the outside (relief).

These units can also operate as gravity ventilators, allowing air to flow from an enclosed area using the "Stack Effect." The amount of air flow will depend on the temperature difference inside and outside the area and the height difference between the ventilator and the outside air intake to the area.

Construction/Specification Checklist

- Five year warranty.
- Low contour spun aluminum hood for attractive appearance.
- All heavy-gauge aluminum construction.
- Weather resistance design for long life and maintenance-free operation.
- Galvanized birdscreen is standard.
- Available in 8 sizes for a wide range of performance capabilities.
- RCXII has one-piece curb cap with spun inlet for maximum efficiency.
- RCXII-SF is self flashing.
- Shipped completely assembled for ease in installation.

Options/Accessories

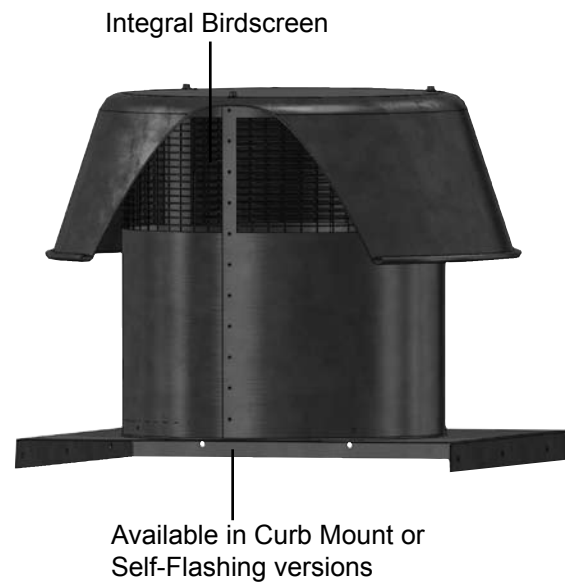
Roof Curb: Prefabricated insulated heavy-gauge galvanized steel welded construction, 12" high (other heights are also available) with 1-1/2" wood nailer. Assures perfect fit of ventilator to roof curb. Options include burglar bars, single and double pitch construction and hinged curbs for easy duct access.

Motor Operated Damper: Motor operated aluminum damper for positive closure against backdraft.

Automatic Damper: Automatic aluminum damper for ease in installation and effective backdraft protection.

Special Coatings: Epoxy, Heresite and Eisenheiss (synthetic resin) are available when special coatings are required.

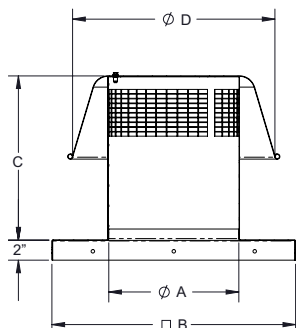
Insect/Weather Screen: Helps prevent insects, snow, airborne mist or water droplets from entering on supply applications exceeding 650 FPM velocity.



RCXII/RCXII-SF DIMENSIONAL DATA

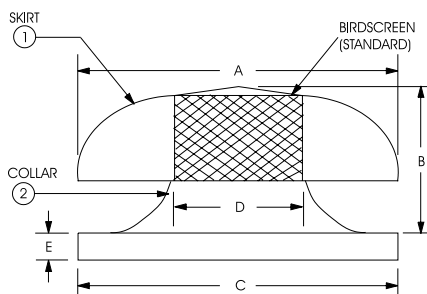


RCXII (sizes 6-20)



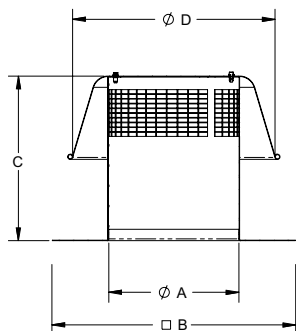
Size	A	B	C	D
06	7	16.5	10	14
08	9	16.5	12	14
10	11	24	14	20
12	13	24	16	20
14	15	24	18	27
16	17	24	20	27
18	19	29.5	22	27
20	21	29.5	22	30

RCXII (sizes 24-36)



Size	Neck Area sq. ft.	Dimensions (Inches)					Metal Ga.	
		A	B	C	D	E	1	2
24	3.30	43-3/4	12-1/2	35-1/2	24-5/8	2	0.063	0.063
26	3.69	43-3/4	17-3/8	35-1/2	26	2	0.063	0.063
30	5.16	43-3/4	17-3/8	42-1/2	30-3/4	2	0.063	0.080
33	5.94	54-3/4	17-3/8	42-1/2	33	2	0.100	0.080
36	7.06	54-3/4	17-3/8	42-1/2	36	2	0.100	0.080

RCXII-SF



Size	A	B	C	D
06	7	18	10	14
08	9	22	12	14
10	11	24	14	20
12	13	24	16	20
14	15	28	18	27
16	17	28	20	27
18	19	32	22	27
20	21	36	22	30

RCXII/RCXII-SF PERFORMANCE DATA



Models RCXII (sizes 6-20) and Models RCXII-SF

Relief	Throat Area Ft²	.025	.050	.100	.125	.150	.200	.250	.300	.350	BDD O.D Sq. (RCXII)	Prefab Curb Recom. O.D (RCXII)
6	0.3	93	131	185	207	227	262	293	320	346	8	14-3/4
8	0.4	221	313	442	494	541	625	699	766	827	8	14-3/4
10	0.7	297	420	594	664	727	840	939	1029	1111	12	22-1/4
12	0.9	493	697	986	1102	1208	1394	1559	1708	1845	12	22-1/4
14	1.2	604	853	1207	1349	1478	1707	1908	2091	2258	12	22-1/4
16	1.6	746	1055	1492	1668	1827	2110	2359	2584	2791	12	22-1/4
18	2.0	919	1300	1838	2055	2251	2599	2906	3184	3439	20	27-3/4
20	2.4	1127	1593	2253	2519	2759	3186	3562	3902	4215	20	27-3/4

Intake	Throat Area Ft²	.025	.050	.100	.125	.150	.200	.250	.300	.350	BDD O.D Sq. (RCXCII)	Prefab Curb Recom. O.D (RCXII)
6	0.3	64	91	128	143	157	181	202	222	239	8	14-3/4
8	0.4	148	209	296	331	363	419	468	513	554	8	14-3/4
10	0.7	202	286	404	452	495	571	639	700	756	12	22-1/4
12	0.9	330.5	467	661	739	810	935	1045	1145	1237	12	22-1/4
14	1.2	440.5	623	881	985	1079	1246	1393	1526	1648	12	22-1/4
16	1.6	552	781	1104	1234	1352	1561	1746	1912	2065	12	22-1/4
18	2.0	707.5	1001	1415	1582	1733	2001	2237	2451	2647	20	27-3/4
20	2.4	856	1211	1712	1914	2097	2421	2707	2965	3203	20	27-3/4

Insect Screens - Add .10 to area shown in table.

Damper - Add .10 to area shown in table.

Refer to page 3 for formulas for help in sizing.

Model RCXII (sizes 24-36)

Relief	Throat Area Ft²	.030	.060	.090	.125	.150	.200	.250	.300	BDD O.D Sq. (RCXII)	Prefab Curb Recom. O.D (RCXII)
24	3.30	1535	2168	2656	3128	3429	3960	4425	4851	26	33-3/4
26	3.69	1716	2424	2970	3498	3834	4428	4948	5424	26	33-3/4
30	5.16	2399	3390	4154	4892	5361	6192	6920	7585	32	40-3/4
33	5.94	2762	3903	4782	5631	6172	7128	7966	8732	32	40-3/4
36	7.06	3283	4638	5683	6693	7335	8472	9467	10378	32	40-3/4

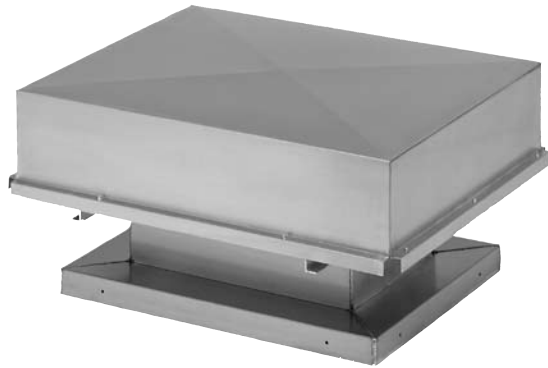
Intake	Throat Area Ft²	.030	.060	.090	.125	.150	.200	.250	.300	BDD O.D Sq. (RCXII)	Prefab Curb Recom. O.D (RCXII)
24	3.30	1376	1944	2383	2808	3076	3551	3969	4346	26	33-3/4
26	3.69	1539	2173	2664	3140	3439	3970	4439	4860	26	33-3/4
30	5.16	2152	3039	3726	4391	4809	5552	6207	6796	32	40-3/4
33	5.94	2476	3499	4289	5055	5536	6391	7146	7823	32	40-3/4
36	7.06	2944	4158	5097	6008	6580	7597	8493	9298	32	40-3/4

Bold selections are over recommended 650 FPM. Pick next larger size or use optional weather screen.

Insect Screens - Add .10 to area shown in table.

Damper - Add .10 to area shown in table.

Refer to page 3 for formulas for help in sizing.



Application

Model BGH gravity ventilator offers a modern low silhouette design that blends with roof lines and other equipment. Designed for maximum airflow passage and weathertight integrity, Model BGH comes in either intake or relief models in aluminum or galvanized finishes. An extensive range of sizes are offered with many standard and optional features. Exhaust models have a 1:1 ratio of hood perimeter opening to throat area and supply models incorporate a 2:1 ratio.

To meet other size or ventilation capacity requirements, in addition to those listed in the following tables, custom sized units are available upon request. Consult your representative or factory for specific details and performance capabilities.

Construction/Specification Checklist

- Generously sized throat and hood perimeter openings for low resistance and more efficient airflow.
- Hood is constructed of .050" aluminum and assembled with standing seams and snap lock seams that are secured with spot welds. No screws or rivets to break or work loose.
- Hood is reinforced and braced for extra rigidity and resistance to wind damage. Utilizes channels and structural angles throughout.
- All hoods are fabricated with 1/2" x 1/2" mesh galvanized welded screen as standard equipment. Screens are attached to full hood perimeter opening with stainless steel or zinc plated fasteners. Screens are omitted when hoods are equipped with filters.
- Full 360° perimeter hood opening for total wind action from any direction for more reliable airflow performance.
- Curb base constructed of .080" aluminum. All corners are miter cut. All seams and corners are continuous welded for strength and water tightness.
- Hoods have a special deflector flange on edge of perimeter opening for added protection against rain and snow. Wide overhang for storm protection.

Options/Accessories

Aluminum Birdscreens: Consists of .060" thick 1/2" x 1" diamond shape expanded aluminum. Attached to the full perimeter opening of the hood with stainless or zinc plated fasteners.

Hinged Hood: For easy access to backdraft dampers and to service filters and screens.

Insulated Hood: To reduce condensation drip. Offered in rubberized anti-condensate undercoating or as 1" thick fiberglass insulation.

Filters: Offered as 1" or 2" thick permanent type aluminum mesh mounted for easy cleaning and attached to full perimeter opening of the hood. Birdscreens are omitted when equipped with filters. *Note:* Add .17" to the area listed in the tables when using filters on AIR INTAKE ventilators.

Insect Screen: Consists of 18 mesh aluminum screen. Attached to the full perimeter opening of the hood. *Note:* When using insect screens on EXHAUST ventilators add .10" to the area listed in the tables. For INTAKE ventilators add .05" to the listed area.

Curbs: Roof-over-flashing or self-flashing types. Galvanized steel or aluminum. Single or double pitched roof types and sound attenuating.

Decorative Coatings: Available as an industrial grade enamel in a variety of colors.

Protective Coatings

Eisenheiss: A synthetic resin that forms a tough black coating that offers better protection against most acids and other corrosive agents when compared to conventional industrial finishes.

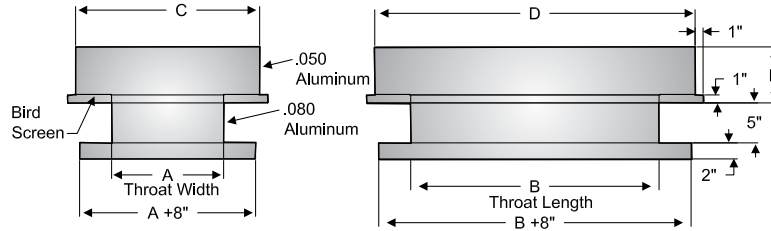
Epoxy: Considered one of the best heavy-duty multipurpose finishes resistant to most chemicals and corrosive agents. A tough gray colored durable coating.

Heresite: A black phenolic coating that has good resistance to heat, solvents and concentrates of most acids except strong oxidizing agents. Resistant to weak alkalis but not recommended for hydrofluoric acid nor hypochlorite salts.



BGH PERFORMANCE AND DIMENSIONAL DATA

Gravity Relief 1:1 Ratio



Dimensional Data					Throat Velocity in FPM @ Static Pressure - Relief				
Throat Area	Throat Size	Hood Size			536	758	848	1073	1200
					CFM @ Static Pressure - Relief				
		A x B	C	D	E	.050	.100	.125	.200
1.00	12 x 12	18	18	7	536	758	848	1073	1200
1.50	12 x 18	19	25	7	804	1137	1272	1610	1800
2.00	12 x 24	20	32	7	1072	1516	1696	2146	2400
2.50	12 x 30	20	38	7	1340	1895	2120	2683	3000
3.00	12 x 36	21	45	7	1608	2274	2544	3219	3600
3.50	12 x 42	22	52	7	1876	2653	2968	3756	4200
4.00	12 x 48	23	57	7	2144	3032	3392	4292	4800
1.36	14 x 14	20	20	7	730	1032	1154	1460	1633
1.75	14 x 18	22	22	7	938	1327	1484	1878	2100
2.33	14 x 24	23	33	7	1251	1769	1979	2504	2800
2.92	14 x 30	23	39	7	1563	2211	2473	3130	3500
3.50	14 x 36	23	45	7	1876	2653	2968	3756	4200
4.08	14 x 42	24	52	7	2189	3095	3463	4381	4900
4.67	14 x 48	24	58	7	2501	3537	3957	5007	5600
5.25	14 x 54	24	64	7	2814	3980	4452	5633	6300
1.78	16 x 16	23	23	7	953	1348	1508	1908	2133
2.22	16 x 20	24	28	7	1191	1684	1884	2384	2667
2.67	16 x 24	25	33	7	1429	2021	2261	2861	3200
3.33	16 x 30	26	40	7	1787	2527	2827	3577	4000
4.00	16 x 36	26	46	7	2144	3032	3392	4292	4800
4.67	16 x 42	26	52	7	2501	3537	3957	5007	5600
5.33	16 x 48	27	59	7	2859	4043	4523	5723	6400
6.00	16 x 54	27	65	7	3216	4548	5088	6438	7200
6.67	16 x 60	27	71	7	3573	5053	5653	7153	8000
7.33	16 x 66	28	78	7	3931	5559	6219	7869	8800
2.25	18 x 18	26	26	8	1206	1706	1908	2414	2700
3.00	18 x 24	27	33	8	1608	2274	2544	3219	3600
3.75	18 x 30	28	40	8	2010	2843	3180	4024	4500
4.50	18 x 36	29	47	8	2412	3411	3816	4829	5400
5.25	18 x 42	29	53	8	2814	3980	4452	5633	6300
6.00	18 x 48	30	60	8	3216	4548	5088	6438	7200
6.75	18 x 54	30	66	8	3618	5117	5724	7243	8100
7.50	18 x 60	30	72	8	4020	5685	6360	8048	9000
8.25	18 x 66	31	79	8	4422	6254	6996	8852	9900
9.00	18 x 72	31	85	8	4824	6822	7632	9657	10800
2.78	20 x 20	29	29	9	1489	2106	2356	2981	3333
3.33	20 x 24	31	33	9	1787	2527	2827	3577	4000
4.17	20 x 30	31	41	9	2233	3158	3533	4471	5000
5.00	20 x 36	31	47	9	2680	3790	4240	5365	6000
5.83	20 x 42	32	52	9	3127	4422	4947	6259	7000
6.67	20 x 48	33	61	9	3573	5053	5653	7153	8000

Hoods wider than 98" will ship knocked down.
 Insect Screens - Add .10 to area shown in table. Damper - Add .10 to area shown in table. Filters - Add .17 to area shown in table.
 Refer to page 3 for formulas for help in sizing.

Gravity Relief 1:1 Ratio Cont.

Dimensional Data					Throat Velocity in FPM @ Static Pressure - Relief				
Throat Area	Throat Size	Hood Size			536	758	848	1073	1200
					CFM @ Static Pressure - Relief				
	A x B	C	D	E	.050	.100	.125	.200	.250
7.50	20 x 54	33	67	9	4020	5685	6360	8048	9000
8.33	20 x 60	33	73	9	4467	6317	7067	8942	10000
9.17	20 x 66	34	80	9	4913	6948	7773	9836	11000
10.00	20 x 72	34	86	9	5360	7580	8480	10730	12000
10.83	20 x 78	34	92	9	5807	8212	9187	11624	13000
11.67	20 x 84	35	98	9	6253	8843	9893	12518	14000
4.00	24 x 24	34	34	11	2144	3032	3392	4292	4800
5.00	24 x 30	36	42	11	2680	3790	4240	5365	6000
6.00	24 x 36	37	49	11	3216	4548	5088	6438	7200
7.00	24 x 42	38	56	11	3752	5306	5936	7511	8400
8.00	24 x 48	38	62	11	4288	6064	6784	8584	9600
9.00	24 x 54	39	69	11	4824	6822	7632	9657	10800
10.00	24 x 60	39	75	11	5360	7580	8480	10730	12000
11.00	24 x 66	40	82	11	5896	8338	9328	11803	13200
12.00	24 x 72	40	88	11	6432	9096	10176	12876	14400
13.00	24 x 78	40	94	11	6968	9854	11024	13949	15600
14.00	24 x 84	40	100	11	7504	10612	11872	15022	16800
15.00	24 x 90	40	106	11	8040	11370	12720	16095	18000
6.25	30 x 30	43	43	13	3350	4738	5300	6706	7500
7.50	30 x 36	44	50	13	4020	5685	6360	8048	9000
8.75	30 x 42	45	57	13	4690	6633	7420	9389	10500
10.00	30 x 48	45	65	13	5360	7580	8480	10730	12000
11.25	30 x 54	45	74	13	6030	8528	9540	12071	13500
12.50	30 x 60	48	78	13	6700	9475	10600	13413	15000
13.75	30 x 66	48	84	13	7370	10423	11660	14754	16500
15.00	30 x 72	49	91	13	8040	11370	12720	16095	18000
16.25	30 x 78	49	97	13	8710	12318	13780	17436	19500
17.50	30 x 84	50	104	13	9380	13265	14840	18778	21000
18.75	30 x 90	50	111	13	10050	14213	15900	20119	22500
9.00	36 x 36	52	52	15	4824	6822	7632	9657	10800
10.50	36 x 42	53	59	15	5628	7959	8904	11267	12600
12.00	36 x 48	54	66	15	6432	9096	10176	12876	14400
13.50	36 x 54	55	73	15	7236	10233	11448	14486	16200
15.00	36 x 60	56	80	15	8040	11370	12720	16095	18000
16.50	36 x 66	56	86	15	8844	12507	13992	17705	19800
18.00	36 x 72	57	93	15	9648	13644	15264	19314	21600
19.50	36 x 78	58	99	15	10452	14781	16536	20924	23400
21.00	36 x 84	58	106	15	11256	15918	17808	22533	25200
22.50	36 x 90	58	112	15	12060	17055	19080	24143	27000
24.00	36 x 96	59	119	15	12864	18192	20352	25752	28800
25.50	36 x 102	59	124	15	13668	19329	21624	27362	30600
12.25	42 x 42	59	59	15	6566	9286	10388	13144	14700
15.75	42 x 54	62	74	15	8442	11939	13356	16900	18900
17.50	42 x 60	64	82	15	9380	13265	14840	18778	21000
19.25	42 x 66	65	89	15	10318	14592	16324	20655	23100
21.00	42 x 72	65	95	15	11256	15918	17808	22533	25200
22.75	42 x 78	65	101	15	12194	17245	19292	24411	27300
24.50	42 x 84	66	108	15	13132	18571	20776	26289	29400
26.25	42 x 90	66	114	15	14070	19898	22260	28166	31500
28.00	42 x 96	67	121	15	15008	21224	23744	30044	33600
29.75	42 x 102	68	128	15	15946	22551	25228	31922	35700
31.50	42 x 108	68	134	15	16884	23877	26712	33800	37800
16.00	48 x 48	68	68	17	8576	12128	13568	17168	19200
18.00	48 x 54	70	76	17	9648	13644	15264	19314	21600
20.00	48 x 60	71	83	17	10720	15160	16960	21460	24000
22.00	48 x 66	72	90	17	11792	16676	18656	23606	26400

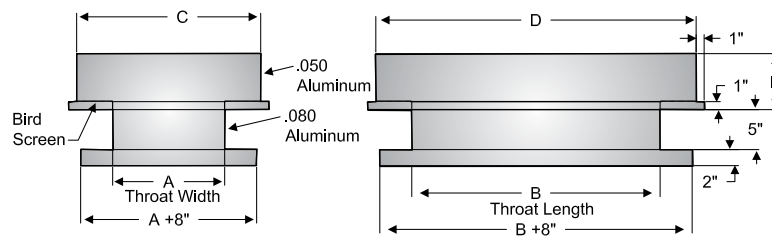
Hoods wider than 98" will ship knocked down.
 Insect Screens - Add .10 to area shown in table. Damper - Add .10 to area shown in table. Filters - Add .17 to area shown in table.
 Refer to page 3 for formulas for help in sizing.

Gravity Relief 1:1 Ratio Cont.

Dimensional Data					Throat Velocity in FPM @ Static Pressure - Relief				
Throat Area	Throat Size	Hood Size			536	758	848	1073	1200
					CFM @ Static Pressure - Relief				
	A x B	C	D	E	.050	.100	.125	.200	.250
24.00	48 x 72	73	97	17	12864	18192	20352	25752	28800
26.00	48 x 78	74	103	17	13936	19708	22048	27898	31200
28.00	48 x 84	75	111	17	15008	21224	23744	30044	33600
30.00	48 x 90	75	117	17	16080	22740	25440	32190	36000
32.00	48 x 96	75	123	17	17152	24256	27136	34336	38400
34.00	48 x 102	75	129	17	18224	25772	28832	36582	40800
36.00	48 x 108	77	137	17	19296	27288	30528	38628	43200
38.00	48 x 114	77	146	17	20368	28804	32224	40774	45600
20.25	54 x 54	77	77	19	10854	15350	17172	21728	24300
22.50	54 x 60	79	85	19	12060	17055	19080	24143	27000
24.75	54 x 66	79	91	19	13266	18761	20988	26557	29700
27.00	54 x 72	80	98	19	14472	20466	22896	28971	32400
29.25	54 x 78	81	104	19	15678	22172	24804	31385	35100
31.50	54 x 84	82	112	19	16884	23877	26712	33800	37800
33.75	54 x 90	82	119	19	18090	25583	28620	36214	40500
36.00	54 x 96	83	125	19	19296	27288	30528	38628	43200
38.25	54 x 102	84	134	19	20502	28994	32436	41042	45900
40.50	54 x 108	85	139	19	21708	30699	34344	43457	48600
42.75	54 x 114	85	144	19	22914	32405	36252	45871	51300
25.00	60 x 60	86	86	21	13400	18950	21200	26825	30000
27.50	60 x 66	87	93	21	14740	20845	23320	29508	33000
30.00	60 x 72	88	100	21	16080	22740	25440	32190	36000
32.50	60 x 78	89	106	21	17420	24635	27560	34873	39000
35.00	60 x 84	90	114	21	18760	26530	29680	37555	42000
37.50	60 x 90	90	120	21	20100	28425	31800	40238	45000
40.00	60 x 96	91	127	21	21440	30320	33920	42920	48000
42.50	60 x 102	92	134	21	22780	32215	36040	45603	51000
45.00	60 x 108	93	141	21	24120	34110	38160	48285	54000
47.50	60 x 114	93	148	21	25460	36005	40280	50968	57000
50.00	60 x 120	94	154	21	26800	37900	42400	53650	60000
30.25	66 x 66	94	94	21	16214	22930	25652	32458	36300
33.00	66 x 72	94	94	21	17688	25014	27984	35409	39600
35.75	66 x 78	95	105	21	19162	27099	30316	38360	42900
38.50	66 x 84	97	115	21	20636	29183	32648	41311	46200
41.25	66 x 90	97	123	21	22110	31268	34980	44261	49500
44.00	66 x 96	97	131	21	23584	33352	37312	47212	52800
46.75	66 x 102	97	139	21	25058	35437	39644	50163	56100
49.50	66 x 108	97	147	21	26532	37521	41976	53114	59400
52.25	66 x 114	97	156	21	28006	39606	44308	56064	62700
55.00	66 x 120	96	165	21	29480	41690	46640	59015	66000
57.75	66 x 126	96	174	21	30954	43775	48972	61966	69300
60.50	66 x 132	96	182	21	32428	45859	51304	64917	72600
36.00	72 x 72	96	110	21	19296	27288	30528	38628	43200
39.00	72 x 78	96	118	21	20904	29562	33072	41847	46800
42.00	72 x 84	96	126	21	22512	31836	35616	45066	50400
45.00	72 x 90	96	134	21	24120	34110	38160	48285	54000
48.00	72 x 96	96	143	21	25728	36384	40704	51504	57600
51.00	72 x 102	96	153	21	27336	38658	43248	54723	61200
54.00	72 x 108	96	163	21	28944	40932	45792	57942	64800
57.00	72 x 114	96	172	21	30552	43206	48336	61161	68400
60.00	72 x 120	96	180	21	32160	45480	50880	64380	72000
63.00	72 x 126	108	168	23	33768	47754	53424	67599	75600
66.00	72 x 132	108	176	23	35376	50028	55968	70818	79200
69.00	72 x 138	108	184	23	36984	52302	58512	74037	82800
72.00	72 x 144	108	192	23	38592	54576	61056	77256	86400

Hoods wider than 98" will ship knocked down.
 Insect Screens - Add .10 to area shown in table. Damper - Add .10 to area shown in table. Filters - Add .17 to area shown in table.
 Refer to page 3 for formulas for help in sizing.

Gravity Intake 2:1 Ratio



Dimensional Data					Throat Velocity in FPM @ Static Pressure - Intake				
Throat Area	Throat Size	Hood Size			312/625	441/883	592/998	592/1185	625/1250
		A x B	C	D	E	CFM @ Static Pressure - Intake			
					.050	.100	.125	.180	.200
1.00	12 x 12	21	21	7	625	883	988	1185	1250
1.50	12 x 18	23	29	7	938	1325	1482	1778	1875
2.00	12 x 24	25	37	7	1250	1766	1976	2370	2500
2.50	12 x 30	26	44	7	1563	2208	2470	2963	3125
3.00	12 x 36	27	51	7	1875	2649	2964	3555	3750
3.50	12 x 42	29	57	7	2188	3091	3458	4148	4375
4.00	12 x 48	28	64	7	2500	3532	3952	4740	5000
1.36	14 x 14	25	25	8	851	1202	1345	1613	1701
1.75	14 x 18	26	30	8	1094	1545	1729	2074	2188
2.33	14 x 24	28	38	8	1458	2060	2305	2765	2917
2.92	14 x 30	29	45	8	1823	2575	2882	3456	3646
3.50	14 x 36	30	52	8	2188	3091	3458	4148	4375
4.08	14 x 42	30	57	8	2552	3606	4034	4839	5104
4.67	14 x 48	31	65	8	2917	4121	4611	5530	5833
5.25	14 x 54	32	72	8	3281	4636	5187	6221	6563
1.78	16 x 16	28	28	9	1111	1570	1756	2107	2222
2.22	16 x 20	29	33	9	1389	1962	2196	2633	2778
2.67	16 x 24	31	39	9	1667	2355	2635	3160	3333
3.33	16 x 30	32	45	9	2083	2943	3293	3950	4167
4.00	16 x 36	33	53	9	2500	3532	3952	4740	5000
4.67	16 x 42	33	59	9	2917	4121	4611	5530	5833
5.33	16 x 48	35	67	9	3333	4709	5269	6320	6667
6.00	16 x 54	36	74	9	3750	5298	5928	7110	7500
6.67	16 x 60	36	80	9	4167	5887	6587	7900	8333
7.33	16 x 66	37	87	9	4583	6475	7245	8690	9167
2.25	18 x 18	32	32	10	1406	1987	2223	2666	2813
3.00	18 x 24	33	40	10	1875	2649	2964	3555	3750
3.75	18 x 30	36	48	10	2344	3311	3705	4444	4688
4.50	18 x 36	37	55	10	2813	3974	4446	5333	5625
5.25	18 x 42	38	62	10	3281	4636	5187	6221	6563
6.00	18 x 48	39	69	10	3750	5298	5928	7110	7500
6.75	18 x 54	40	76	10	4219	5960	6669	7999	8438
7.50	18 x 60	40	82	10	4688	6623	7410	8888	9375
8.25	18 x 66	41	89	10	5156	7285	8151	9776	10313
9.00	18 x 72	41	95	10	5625	7947	8892	10665	11250
2.78	20 x 20	35	35	11	1736	2453	2744	3292	3472
3.33	20 x 24	37	41	11	2083	2943	3293	3950	4167
4.17	20 x 30	38	48	11	2604	3679	4117	4938	5208
5.00	20 x 36	40	56	11	3125	4415	4940	5925	6250
5.83	20 x 42	40	60	11	3646	5151	5763	6913	7292
6.67	20 x 48	42	70	11	4167	5887	6587	7900	8333

Hoods wider than 98" will ship knocked down.
 Insect Screens - Add .10 to area shown in table. Damper - Add .10 to area shown in table. Filters - Add .17 to area shown in table.
 Refer to page 3 for formulas for help in sizing.

Gravity Intake 2:1 Ratio Cont.

Dimensional Data					Throat Velocity in FPM @ Static Pressure - Intake				
Throat Area	Throat Size	Hood Size			312/625	441/883	592/998	592/1185	625/1250
					CFM @ Static Pressure - Intake				
	A x B	C	D	E	.050	.100	.125	.180	.200
7.50	20 x 54	43	77	11	4688	6623	7410	8888	9375
8.33	20 x 60	44	84	11	5208	7358	8233	9875	10417
9.17	20 x 66	45	91	11	5729	8094	9057	10863	11458
10.00	20 x 72	45	97	11	6250	8830	9880	11850	12500
10.83	20 x 78	46	106	11	6771	9956	10703	12838	13542
11.67	20 x 84	46	110	11	7292	10302	11527	13825	14583
4.00	24 x 24	42	42	11	2500	3532	3952	4740	5000
5.00	24 x 30	44	50	11	3125	4415	4940	5925	6250
6.00	24 x 36	46	58	11	3750	5298	5928	7110	7500
7.00	24 x 42	48	66	11	4375	6181	6916	8295	8750
8.00	24 x 48	49	73	11	5000	7064	7904	9480	10000
9.00	24 x 54	50	80	11	5625	7947	8892	10665	11250
10.00	24 x 60	52	88	11	6250	8830	9880	11850	12500
11.00	24 x 66	52	94	11	6875	9713	10868	13035	13750
12.00	24 x 72	52	100	11	7500	10596	11856	14220	15000
13.00	24 x 78	53	109	11	8125	11479	12844	15405	16250
14.00	24 x 84	54	114	11	8750	12362	13832	16590	17500
15.00	24 x 90	55	127	11	9375	13245	14820	17775	18750
6.25	30 x 30	53	53	13	3906	5519	6175	7406	7813
7.50	30 x 36	55	61	13	4688	6623	7410	8888	9375
8.75	30 x 42	57	69	13	5469	7726	8645	10369	10938
10.00	30 x 48	57	76	13	6250	8830	9880	11850	12500
11.25	30 x 54	60	84	13	7031	9934	11115	13331	14063
12.50	30 x 60	61	91	13	7813	11038	12350	14813	15625
13.75	30 x 66	62	98	13	8594	12141	13585	16294	17188
15.00	30 x 72	63	105	13	9375	13245	14820	17775	18750
16.25	30 x 78	64	114	13	10156	14349	16055	19256	20313
17.50	30 x 84	65	119	13	10938	15453	17290	20738	21875
18.75	30 x 90	66	132	13	11719	16556	18525	22219	23438
9.00	36 x 36	63	63	15	5625	7947	8892	10665	11250
10.50	36 x 42	66	72	15	6563	9272	10374	12443	13125
12.00	36 x 48	67	79	15	7500	10596	11856	14220	15000
13.50	36 x 54	69	87	15	8438	11921	13338	15998	16875
15.00	36 x 60	70	94	15	9375	13245	14820	17775	18750
16.50	36 x 66	71	101	15	10313	14570	16302	19553	20625
18.00	36 x 72	72	108	15	11250	15894	17784	21330	22500
19.50	36 x 78	74	117	15	12188	17219	19266	23108	24375
21.00	36 x 84	75	123	15	13125	18543	20748	24885	26250
22.50	36 x 90	75	130	15	14063	19868	22230	26663	28125
24.00	36 x 96	77	137	15	15000	21192	23712	28440	30000
25.50	36 x 102	78	150	15	15938	22517	25194	30218	31875
12.25	42 x 42	74	74	18	7656	10817	12103	14516	15313
15.75	42 x 54	78	90	18	9844	13907	15561	18664	19688
17.50	42 x 60	80	98	18	10938	15453	17290	20738	21875
19.25	42 x 66	81	105	18	12031	16998	19019	22811	24063
21.00	42 x 72	83	113	18	13125	18543	20748	24885	26250
22.75	42 x 78	83	122	18	14219	20088	22477	26959	28438
24.50	42 x 84	84	126	18	15313	21634	24206	29033	30625
26.25	42 x 90	85	135	18	16406	23179	25935	31106	32813
28.00	42 x 96	87	141	18	17500	24724	27664	33180	35000
29.75	42 x 102	88	150	18	18594	26269	29393	35254	37188
31.50	42 x 108	89	155	18	19688	27815	31122	37328	39375
16.00	48 x 48	84	84	20	10000	14128	15808	18960	20000
18.00	48 x 54	87	93	20	11250	15894	17784	21330	22500
20.00	48 x 60	88	100	20	12500	17660	19760	23700	25000
22.00	48 x 66	89	107	20	13750	19426	21736	26070	27500

Hoods wider than 98" will ship knocked down.
 Insect Screens - Add .10 to area shown in table. Damper - Add .10 to area shown in table. Filters - Add .17 to area shown in table.
 Refer to page 3 for formulas for help in sizing.

Gravity Intake 2:1 Ratio Cont.

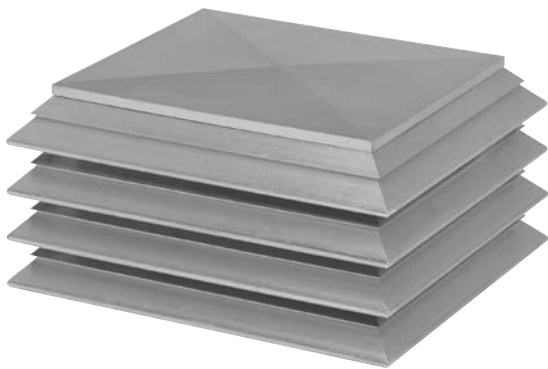
Dimensional Data					Throat Velocity in FPM @ Static Pressure - Intake				
Throat Area	Throat Size	Hood Size			312/625	441/883	592/998	592/1185	625/1250
					CFM @ Static Pressure - Intake				
	A x B	C	D	E	.050	.100	.125	.180	.200
24.00	48 x 72	92	116	20	15000	21192	23712	28440	30000
26.00	48 x 78	94	126	20	16250	22958	25688	30810	32500
28.00	48 x 84	95	131	20	17500	24724	27664	33180	35000
30.00	48 x 90	95	140	20	18750	26490	29640	35550	37500
32.00	48 x 96	96	144	20	20000	28256	31616	37920	40000
34.00	48 x 102	96	155	20	21250	30022	33592	40290	42500
36.00	48 x 108	95	165	20	22500	31788	35568	42660	45000
38.00	48 x 114	97	172	20	23750	33554	37544	45030	47500
20.25	54 x 54	95	95	23	12656	17881	20007	23996	25313
22.50	54 x 60	97	103	23	14063	19868	22230	26663	28125
24.75	54 x 66	98	110	23	15469	21854	24453	29329	30938
27.00	54 x 72	98	121	23	16875	23841	26676	31995	33750
29.25	54 x 78	98	124	23	18281	25828	28899	34661	36563
31.50	54 x 84	98	140	23	19688	27815	31122	37328	39375
33.75	54 x 90	98	150	23	21094	29801	33345	39994	42188
36.00	54 x 96	98	160	23	22500	31788	35568	42660	45000
38.25	54 x 102	98	170	23	23906	33775	37791	45326	47813
40.50	54 x 108	98	179	23	25313	35762	40014	47993	50625
42.75	54 x 114	98	179	25	26719	37748	42237	50659	53438
25.00	60 x 60	95	115	25	15625	22075	24700	29625	31250
27.50	60 x 66	96	124	25	17188	24283	27170	32588	34375
30.00	60 x 72	109	121	25	18750	26490	29640	35550	37500
32.50	60 x 78	111	131	25	20313	28698	32110	38513	40625
35.00	60 x 84	113	137	25	21875	30905	34580	41475	43750
37.50	60 x 90	114	140	25	23438	33113	37050	44438	46875
40.00	60 x 96	115	151	25	25000	35320	39520	47400	50000
42.50	60 x 102	115	155	25	26563	37528	41990	50363	53125
45.00	60 x 108	118	166	25	28125	39735	44460	53325	56250
47.50	60 x 114	118	175	25	29688	41943	46930	56288	59375
50.00	60 x 120	118	184	25	31250	44150	49400	59250	62500
30.25	66 x 66	98	134	25	18906	26711	29887	35846	37813
33.00	66 x 72	98	134	25	20625	29139	32604	39105	41250
35.75	66 x 78	117	136	25	22344	31567	35321	42364	44688
38.50	66 x 84	117	143	25	24063	33996	38038	45623	48125
41.25	66 x 90	117	150	25	25781	36424	40755	48881	51563
44.00	66 x 96	117	162	25	24500	38852	43472	52140	55000
46.75	66 x 102	117	173	26	29219	41280	46189	55399	58438
49.50	66 x 108	117	182	26	30938	43709	48906	58658	61875
52.25	66 x 114	117	193	26	32656	46137	51623	61916	65313
55.00	66 x 120	124	192	28	34375	48565	54340	65175	68750
57.75	66 x 126	130	192	28	36094	50993	57057	68434	72188
60.50	66 x 132	138	190	28	37813	53422	59774	71693	75625
36.00	72 x 72	117	137	25	22500	31788	35568	42660	45000
39.00	72 x 78	126	134	28	24375	34437	38532	46215	48750
42.00	72 x 84	130	142	29	26250	37086	41496	49770	52500
45.00	72 x 90	132	148	28	28125	39735	44460	53325	56250
48.00	72 x 96	133	157	29	30000	42384	47424	56880	60000
51.00	72 x 102	140	170	28	31875	45033	50388	60435	63750
54.00	72 x 108	136	172	29	33750	47682	53352	63990	67500
57.00	72 x 114	140	178	28	35625	50331	56316	67545	71250
60.00	72 x 120	139	187	29	37500	52980	59280	71100	75000
63.00	72 x 126	144	190	29	39375	55629	62244	74655	78750
66.00	72 x 132	144	198	29	41250	58278	65208	78210	82500
69.00	72 x 138	144	208	29	43125	60927	68172	81765	86250
72.00	72 x 144	144	216	29	45000	63576	71136	85320	90000

Hoods wider than 98" will ship knocked down.
 Insect Screens - Add .10 to area shown in table. Damper - Add .10 to area shown in table. Filters - Add .17 to area shown in table.
 Refer to page 3 for formulas for help in sizing.



BGH Performance Data

RLX LOUVERED PENTHOUSE



Application

Model RLX aluminum louvered penthouse provides a low silhouette and modern design for fresh air intake, pressure relief and gravity applications. With hundreds of optional lengths and heights available, the RLX is frequently used for enclosing unsightly rooftop equipment. The storm resistant aluminum louver design provides weather integrity when properly sized. Catalog capacity ranges from 395 to 69,500 CFM with much greater ranges available in custom sizes. Companion, louvered fan Model LSF offers continuity in rooftop equipment designs.

Construction/Specification Checklist

- All aluminum construction for weather resistance, long life and maintenance-free operation.
- Louvers are made from heavy-gauge aluminum.
- Corners are miter cut and heliarch welded for strength and weather protection.
- Cross-braced with heavy-gauge angle for strength and wind resistance.
- Top is cross-braced and rated to 30 pounds per square foot for snow load protection.
- 1/2" x 1" galvanized birdscreen. (Deleted when filters used).

Shipping

- Units with width of 84" and smaller are shipped assembled. Units with a width of 90" and larger are shipped in two pieces for field assembly, (Ex: 84 x 144 ships assembled 90 x 90 ships in 2 pieces)
- Knockdown units assemble with standard tools. Easy installation directions and fasteners are included.

Options/Accessories

Roof Curb: Prefabricated heavy-gauge galvanized steel, welded construction, 8" high (other heights are also available) with 1-1/2" wood nailer. Assures perfect fit of ventilator to roof opening. Options include burglar bars, single or double pitch construction and hinged curbs for easy duct access.

Motor Operated Damper: Motor operated aluminum damper for positive closure against backdraft.

Automatic Damper: Automatic aluminum damper for ease in installation and effective backdraft protection.

Special Coatings: Epoxy, Heresite and Eisenheiss (synthetic resin) are available when special coatings are required.

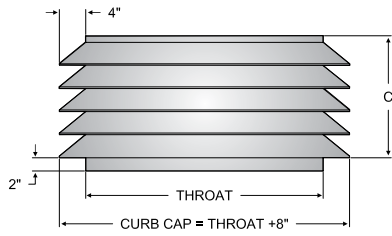
Insulation: Mastic anti-condensate coating or 1" fiberglass insulation is added to underside of top to help prevent condensation.

Filters: Permanent type aluminum mesh filters attached to full perimeter of hood. Installed for easy cleaning. On air intake, add .15" to static pressure listed in the tables.

Insect/Weather Screen: Helps prevent insects and snow (in extreme conditions) from entering units. Add .10" to the static pressure tables for exhaust models and .05" for intake ventilators.

Access Section: Used for easier access when unit is used as an equipment cover.

RLX - RELIEF - PERFORMANCE AND DIMENSIONAL DATA



Dimensional Data							Throat Velocity in FPM @ Static Pressure - Relief					
Throat Area	Throat Size	Curb Cap	Height C	No. Tiers	Outlet Area Sq. Ft.	Additional Outlet Area for Each Extra Louver	579	767	916	1104	1230	1390
							CFM @ Static Pressure - Relief					
							.040	.070	.100	.145	.180	.230
1.00	12 X 12	20 X 20	11	2	2.5	1.0	579	767	916	1104	1230	1390
1.50	12 X 18	20 X 26	11	2	2.8	1.2	869	1151	1374	1656	1845	2085
2.00	12 X 24	20 X 32	11	2	3.2	1.5	1158	1534	1832	2208	2460	2780
2.50	12 X 30	20 X 38	11	2	3.6	1.7	1448	1918	2290	2760	3075	3475
1.78	16 X 16	24 X 24	11	2	3.3	1.4	1029	1364	1628	1963	2187	2471
2.22	16 X 20	24 X 28	11	2	3.7	1.5	1287	1704	2036	2453	2733	3089
2.67	16 X 24	24 X 32	11	2	4.2	1.7	1544	2045	2443	2944	3280	3707
3.33	16 X 30	24 X 38	11	2	4.8	1.9	1930	2557	3053	3680	4100	4633
4.00	16 X 36	24 X 44	11	2	5.4	2.2	2316	3068	3664	4416	4920	5560
2.25	18 X 18	26 X 26	15 1/2	3	5.7	1.7	1303	1726	2061	2484	2768	3128
3.00	18 X 24	26 X 32	15 1/2	3	6.4	2.0	1737	2301	2748	3312	3690	4170
3.75	18 X 30	26 X 38	15 1/2	3	7.1	2.3	2171	2876	3435	4140	4613	5213
4.50	18 X 36	26 X 44	15 1/2	3	7.8	2.6	2606	3452	4122	4968	5535	6255
4.00	24 X 24	32 X 32	15 1/2	3	8.4	2.3	2316	3068	3664	4416	4920	5560
5.00	24 X 30	32 X 38	15 1/2	3	7.8	2.6	2895	3835	4580	5520	6150	6950
6.00	24 X 36	32 X 44	15 1/2	3	8.4	2.9	3474	4602	5496	6624	7380	8340
7.00	24 X 42	32 X 50	15 1/2	3	9.1	3.2	4053	5369	6412	7728	8610	9730
8.00	24 X 48	32 X 56	15 1/2	3	9.8	3.5	4632	6136	7328	8832	9840	11120
6.25	30 X 30	38 X 38	20	4	12.1	2.9	3619	4794	5725	6900	7688	8688
7.50	30 X 36	38 X 44	20	4	13.1	3.2	4343	5753	6870	8280	9225	10425
8.75	30 X 42	38 X 50	20	4	14.1	3.5	5066	6711	8015	9660	10763	12163
10.00	30 X 48	38 X 56	20	4	15.0	3.8	5790	7670	9160	11040	12300	13900
11.25	30 X 54	38 X 62	20	4	16.0	4.0	6514	8629	10305	12420	13838	15638
12.50	30 X 60	38 X 68	20	4	16.9	4.4	7238	9588	11450	13800	15375	17375
9.00	36 X 36	44 X 44	20	4	14.0	3.5	5211	6903	8244	9936	11070	12510
10.50	36 X 42	44 X 50	20	4	15.0	3.8	36080	8054	9618	11592	12915	14595
12.00	36 X 48	44 X 56	20	4	16.0	4.0	6948	9204	10992	13248	14760	16680
13.50	36 X 54	44 X 62	20	4	17.0	4.4	7817	10355	12366	14904	16605	18765
15.00	36 X 60	44 X 68	20	4	17.9	4.6	8685	11505	13740	16680	18450	20850
16.50	36 X 66	44 X 74	20	4	18.7	4.9	9554	12656	15114	18216	20295	22935
18.00	36 X 72	44 X 80	20	4	19.8	5.2	10422	13806	16488	19872	22140	25020
12.25	42 X 42	50 X 50	20	4	16.0	4.0	7093	9396	11221	13524	15068	17028
15.75	42 X 54	50 X 62	20	4	17.9	4.6	9119	12080	14427	17388	19373	21893
17.50	42 X 60	50 X 68	20	4	18.8	4.9	10133	13423	16030	19320	21525	24325
19.25	42 X 66	50 X 74	20	4	19.8	5.2	11146	14765	17633	21252	23678	26758
21.00	42 X 72	50 X 80	20	4	20.8	5.5	12159	16107	19236	23184	25830	29190
22.75	42 X 78	50 X 86	24 1/2	5	25.0	5.7	13172	17449	20839	25116	27983	31623
24.50	42 X 84	50 X 92	24 1/2	5	26.2	5.8	14186	18792	22442	27048	30135	34055
16.00	48 X 48	56 X 56	24 1/2	5	23.3	4.6	9264	12272	14656	17664	19680	22240
18.00	48 X 54	56 X 62	24 1/2	5	24.6	4.9	10422	13806	16488	19872	22140	25020
20.00	48 X 60	56 X 68	24 1/2	5	25.8	5.2	11580	15340	18320	22080	24600	27800

Penthouse wider than 90" will ship in pieces.
 Assembly instructions and fasteners are included.

Dampers & Insect Screens - Add .10 to area shown in tables.
 Refer to page 3 for formulas for help in sizing.

RLX Relief Cont.

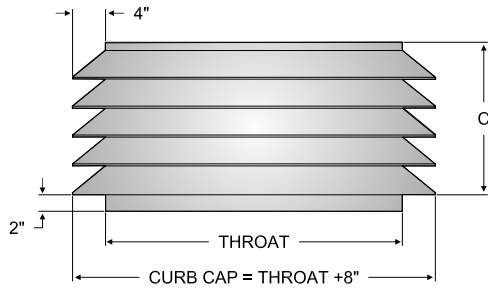
Dimensional Data							Throat Velocity in FPM @ Static Pressure - Relief					
Throat Area	Throat Size	Curb Cap	Height C	No. Tiers	Outlet Area Sq. Ft.	Additional Outlet Area for Each Extra Lou-ver	579	767	916	1104	1230	1390
							CFM @Static Pressure - Relief					
							.040	.070	.100	.145	.125	.20
22.00	48 X 66	56 X 74	24 1/2	5	27.1	5.5	12738	16874	20152	24288	27060	30580
24.00	48 X 72	56 X 80	24 1/2	5	28.4	5.8	13896	18408	21984	24696	29520	33360
26.00	48 X 78	56 X 86	29	6	29.6	6.1	15054	19942	23816	28704	31980	36140
28.00	48 X 84	56 X 92	29	6	32.4	6.4	16212	21476	25648	30912	34440	38920
30.00	48 X 90	56 X 98	29	6	35.4	6.7	17370	23010	27480	33120	36900	41700
32.00	48 X 96	56 X 104	29	6	37.0	7.0	18528	24544	29312	35328	39360	44480
20.25	54 X 54	62 X 62	24 1/2	5	25.8	5.2	11725	15532	18549	22356	24908	28148
22.50	54 X 60	62 X 68	24 1/2	5	27.1	5.5	13028	17258	20610	24840	27675	31275
24.75	54 X 66	62 X 74	24 1/2	5	28.3	5.8	14330	18983	22671	27324	30443	34403
27.00	54 X 72	62 X 80	24 1/2	5	29.6	6.1	15633	20709	24732	29808	33210	37530
29.25	54 X 78	62 X 86	29	6	32.4	6.4	16936	22435	26793	32292	35978	40658
31.50	54 X 84	62 X 92	29	6	35.5	6.7	18239	24161	28854	34776	38745	43785
36.00	54 X 96	62 X 104	29	6	38.5	7.3	20844	27612	32976	39744	44280	50040
40.50	54 X 108	62 X 116	33 1/2	7	49.5	7.9	23450	31064	37098	44712	49815	56295
25.00	60 X 60	68 X 68	29	6	35.0	5.9	14475	19175	22900	27600	30750	34750
27.50	60 X 66	68 X 74	29	6	36.5	6.1	15923	21093	25190	30360	33825	38225
30.00	60 X 72	68 X 80	29	6	38.0	6.4	17370	23010	27480	33120	36900	41700
35.00	60 X 84	68 X 92	29	6	37.0	7.0	20265	26845	32060	38640	43050	48650
40.00	60 X 96	68 X 104	33 1/2	7	47.6	7.6	23160	30680	36640	44160	49200	55600
45.00	60 X 108	68 X 116	33 1/2	7	51.5	8.2	26055	34515	41220	49680	55350	62550
50.00	60 X 120	68 X 128	33 1/2	7	55.0	8.7	28950	38350	45800	55200	61500	69500

Penthouse wider than 90" will ship in pieces.
 Assembly instructions and fasteners are included.

Dampers & Insect Screens - Add .10 to area shown in tables.
 Refer to page 3 for formulas for help in sizing.



RLX - INTAKE - PERFORMANCE AND DIMENSIONAL DATA



Dimensional Data							Throat Velocity in FPM @ Static Pressure - Intake					
Throat Area	Throat Size	Curb Cap	Height C	No. Tiers	Outlet Area Sq. Ft.	Additional Outlet Area for Each Extra Louver	395	559	684	791	912	1021
							CFM @Static Pressure - Intake					
							.030	.060	.090	.120	.160	.200
1.00	12 X 12	20 X 20	11	2	2.5	1.0	395	559	684	791	912	1021
1.50	12 X 18	20 X 26	11	2	2.8	1.2	593	839	1026	1187	1368	1532
2.00	12 X 24	20 X 32	11	2	3.2	1.5	790	1118	1368	1582	1824	2042
2.50	12 X 30	20 X 38	11	2	3.6	1.7	988	1398	1710	1978	2280	2553
1.78	16 X 16	24 X 24	11	2	3.3	1.4	702	994	1216	1406	1621	1815
2.22	16 X 20	24 X 28	11	2	3.7	1.5	878	1242	1520	1758	2027	2269
2.67	16 X 24	24 X 32	11	2	4.2	1.7	1053	1491	1824	2109	2432	2723
3.33	16 X 30	24 X 38	11	2	4.8	1.9	1317	1863	2280	2637	3040	3403
4.00	16 X 36	24 X 44	11	2	5.4	2.2	1580	2236	2736	3164	3648	4084
2.25	18 X 18	26 X 26	15 1/2	3	5.7	1.7	889	1258	1539	1780	2052	2297
3.00	18 X 24	26 X 32	15 1/2	3	6.4	2.0	1185	1677	2052	2373	2736	3063
3.75	18 X 30	26 X 38	15 1/2	3	7.1	2.3	1481	2096	2565	2966	3420	3829
4.50	18 X 36	26 X 44	15 1/2	3	7.8	2.6	1778	2516	3078	3560	4104	45995
4.00	24 X 24	32 X 32	15 1/2	3	8.4	2.3	1580	2236	2736	3164	3648	4084
5.00	24 X 30	32 X 38	15 1/2	3	7.8	2.6	1975	2795	3420	3955	4560	5105
6.00	24 X 36	32 X 44	15 1/2	3	8.4	2.9	2370	3354	4104	4746	5472	6126
7.00	24 X 42	32 X 50	15 1/2	3	9.1	3.2	2765	3913	4788	5537	6384	7147
8.00	24 X 48	32 X 56	15 1/2	3	9.8	3.5	3160	4472	5472	6328	7296	8168
6.25	30 X 30	38 X 38	20	4	12.1	2.9	2469	3494	4275	4944	5700	6381
7.50	30 X 36	38 X 44	20	4	13.1	3.2	2963	4193	5130	5933	6840	7658
8.75	30 X 42	38 X 50	20	4	14.1	3.5	3456	4891	5985	6921	7980	8934
10.00	30 X 48	38 X 56	20	4	15.0	3.8	3950	5590	6840	7910	9120	10210
11.25	30 X 54	38 X 62	20	4	16.0	4.0	4444	6289	7695	8899	10260	11486
12.50	30 X 60	38 X 68	20	4	16.9	4.4	4938	6988	8550	9888	11400	12763
9.00	36 X 36	44 X 44	20	4	14.0	3.5	3555	5031	6156	7119	8208	9189
10.50	36 X 42	44 X 50	20	4	15.0	3.8	4148	5870	7182	8306	9576	10721
12.00	36 X 48	44 X 56	20	4	16.0	4.0	4740	6708	8208	9492	10944	12252
13.50	36 X 54	44 X 62	20	4	17.0	4.4	5333	7547	9234	10679	12312	13784
15.00	36 X 60	44 X 68	20	4	17.9	4.6	5925	8385	10260	11865	13680	15315
16.50	36 X 66	44 X 74	20	4	18.7	4.9	6518	9224	11286	13052	15048	16847
18.00	36 X 72	44 X 80	20	4	19.8	5.2	7110	10062	12312	14238	16416	18378

Penthouse wider than 90" will ship in pieces.
Assembly instructions and fasteners are included.

Dampers & Insect Screens - Add .10 to area shown in tables.
Refer to page 3 for formulas for help in sizing.



RLX Intake Cont.

RLX - Intake - Performance and Dimensional Data

Dimensional Data							Throat Velocity in FPM @ Static Pressure - Intake					
Throat Area	Throat Size	Curb Cap	Height C	No. Tiers	Outlet Area Sq. Ft.	Additional Outlet Area for Each Extra Louver	395	559	684	791	912	1021
							CFM @Static Pressure - Intake					
							.030	.060	.090	.120	.160	.200
12.25	42 X 42	50 X 50	20	4	16.0	4.0	4839	6848	8379	9690	11172	12507
15.75	42 X 54	50 X 62	20	4	17.9	4.6	6221	8804	10773	12458	14364	16081
17.50	42 X 60	50 X 68	20	4	18.8	4.9	6913	9783	11970	13843	15960	17868
19.25	42 X 66	50 X 74	20	4	19.8	5.2	7604	10761	13167	15227	17556	19654
21.00	42 X 72	50 X 80	20	4	20.8	5.5	8295	11739	14364	16611	19152	21441
22.75	42 X 78	50 X 86	24 1/2	5	25.0	5.8	8986	12717	15561	17995	20748	23228
24.50	42 X 84	50 X 92	24 1/2	5	26.2	5.9	9678	13696	16758	19380	22344	25015
16.00	48 X 48	56 X 56	24 1/2	5	23.3	4.6	6320	8944	10944	12656	14592	16336
18.00	48 X 54	56 X 62	24 1/2	5	24.6	4.9	7110	10062	12312	14238	16416	18378
20.00	48 X 60	56 X 68	24 1/2	5	25.8	5.2	7900	11180	13680	15820	18240	20420
22.00	48 X 66	56 X 74	24 1/2	5	27.1	5.5	8690	12298	15048	17402	20064	22462
24.00	48 X 72	56 X 80	24 1/2	5	28.4	5.8	9480	13416	16416	18984	21888	24504
26.00	48 X 78	56 X 86	29	6	29.6	6.1	10270	14534	17784	20566	23712	26546
28.00	48 X 84	56 X 92	29	6	32.4	6.4	11060	15652	19152	22148	25536	28588
30.00	48 X 90	56 X 98	29	6	35.4	6.7	11850	16770	20520	23730	27360	30630
32.00	48 X 96	56 X 104	29	6	37.0	7.0	12640	17888	21888	25312	29184	32672
20.25	54 X 54	62 X 62	24 1/2	5	25.8	5.2	7999	11320	13851	16018	18468	20675
22.50	54 X 60	62 X 68	24 1/2	5	27.1	5.5	8888	12578	15390	17798	20520	22973
24.75	54 X 66	62 X 74	24 1/2	5	28.3	5.8	9776	13835	16929	19577	22572	25270
27.00	54 X 72	62 X 80	24 1/2	5	29.6	6.1	10665	15093	18468	21357	24624	27567
29.25	54 X 78	62 X 86	29	6	32.4	6.4	11554	16351	20007	23137	26676	29864
31.50	54 X 84	62 X 92	29	6	35.5	6.7	12443	17609	21546	24917	28728	32162
36.00	54 X 96	62 X 104	29	6	38.5	7.3	14220	20124	24624	28476	32832	36756
40.50	54 X 108	62 X 116	33 1/2	7	49.5	7.9	15998	22640	27702	32036	36936	41351
25.00	60 X 60	68 X 68	29	6	35.0	5.9	9875	13975	17100	19775	22800	25525
27.50	60 X 66	68 X 74	29	6	36.5	6.1	10863	15373	18810	21753	25080	28078
30.00	60 X 72	68 X 80	29	6	38.0	6.4	11850	16770	20520	23730	27360	30630
35.00	60 X 84	68 X 92	29	6	37.0	7.0	13825	19565	23940	27685	31920	35735
40.00	60 X 96	68 X 104	33 1/2	7	47.6	7.6	15800	22360	27360	31640	36480	40840
45.00	60 X 108	68 X 116	33 1/2	7	51.5	8.2	17775	25155	30780	35595	41040	45945
50.00	60 X 120	68 X 128	33 1/2	7	55.0	8.7	19750	27950	34200	39550	45600	51050

Penthouse wider than 90" will ship in pieces.
 Assembly instructions and fasteners are included.

Dampers & Insect Screens - Add .10 to area shown in tables.
 Refer to page 3 for formulas for help in sizing.

JENCOFAN LIMITED WARRANTY

JencoFan (manufacturer), 6393 Powers Avenue, Jacksonville, Florida 32217, warrants equipment of its manufacture to be free from defects in design, materials and workmanship (exclusive of abrasion, corrosion or erosion) for five (5) years from the date of shipment to the original purchaser or the date of notification of readiness to ship. In order to claim the benefit of this warranty, buyer must notify manufacturer in writing of the claimed defect within ten (10) days after discovering it and return this equipment or parts to the factory with transportation prepaid. In the event of on-site repair, no service technician will be dispatched until manufacturer receives your written purchase order. If any of the following conditions exist, the warranty will be null and void: **(1)** Buyer has permitted other persons not approved or authorized by manufacturer to alter, adjust, replace or repair the equipment or any part thereof. **(2)** Buyer has not followed instructions or other directions given in the contract documents or our maintenance manual. **(3)** When breakage or other loss or damage is the result of any negligence, misuse or fault on the part of any operator or other person not under our supervision or control. **(4)** The defect is the result of designs or drawings made, furnished or specified by others. **(5)** In the case of goods not manufactured but supplied by the manufacturer as part of a contract, manufacturer shall only be liable to the same extent that our supplier is to manufacturer, not to exceed any liability manufacturer would have for warranty on our own equipment. **(6)** Buyer has not paid in full any invoices submitted to buyer which are due for payment. **(7)** Unusual wear and tear of the equipment. Statements relating to the product, its use or installation made prior to the execution of the agreement, are not warranties except to the extent that the contrary is expressly set forth herein. It is understood that such statements were not intended to, and did not, form a part of the agreement; they were merely made in the course of negotiations of the parties. **THIS WARRANTY IS IN LIEU OF ANY OTHER EXPRESS OR IMPLIED WARRANTIES, INCLUDING ANY IMPLIED WARRANTY OF MERCHANTABILITY OR FITNESS FOR ANY PARTICULAR PURPOSE. OUR SOLE AND EXCLUSIVE OBLIGATION UNDER THIS WARRANTY IS TO REPAIR OR REPLACE DEFECTIVE EQUIPMENT OR PARTS OR, AT OUR OPTION, TO PAY THE REASONABLE COST OF REPAIR OR REPLACEMENT. BUYER AGREES THAT NO OTHER REMEDY (INCLUDING, BUT NOT LIMITED TO, INCIDENTAL OR CONSEQUENTIAL DAMAGES, DAMAGES FOR LOST PROFITS OR SALES, OR DAMAGES FOR INJURIES TO PERSON OR PROPERTY) SHALL BE AVAILABLE. NOTWITHSTANDING THE ABOVE, THE TOTAL AMOUNT THAT MAY IN ANY EVENT BE PAYABLE IN SETTLEMENT OF LIABILITY, HOWEVER INCURRED, SHALL NOT EXCEED THE CONTRACT PRICE.**

All specifications are subject to change without notice unless approved in submittal by JencoFan.

JencoFan manufactures a complete line of fans and gravity ventilators for all your ventilation requirements.



MODEL DB
Backward Inclined
Belt Drive
Centrifugal Roof Exhaust



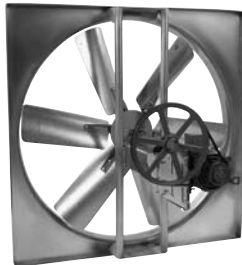
MODEL RED
Backward Inclined
Direct Drive
Centrifugal Roof Exhaust



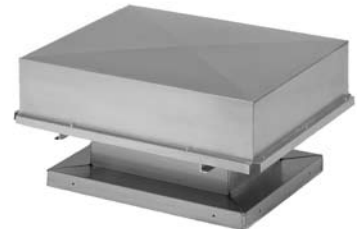
MODEL SQB/SQD
Backward Inclined
Belt Drive/Direct Drive
Square Inline



MODEL UBB/UBS/UBX
Propeller
Belt and Direct Drive
Upblast Roof Exhaust



MODEL L
Propeller
Belt Drive
Sidewall Exhaust or Supply



MODEL BGH
Gravity Hood
Intake or Relief



MODEL KSF
Forward Curved Blower
Belt Drive
Filtered Roof Supply



MODEL TXB/TXD
Backward Inclined
Belt Drive/Direct Drive
Centrifugal Upblast



MODEL BVS
Backward Inclined
Belt Drive
Centrifugal Utility Set

DUE TO CONTINUING RESEARCH JENCOFAN RESERVES THE RIGHT TO CHANGE SPECIFICATIONS WITHOUT NOTICE



6393 POWERS AVENUE
JACKSONVILLE, FLORIDA 32217
P. 904.731.4711 • F. 904.737.8322
www.jencofan.com

Customer Service Only: 1.866.779.7679

REPRESENTED BY: