



# MODEL TRCe500

(Energy Recovery Ventilators (ERV) with EC Motor)



## Specifications

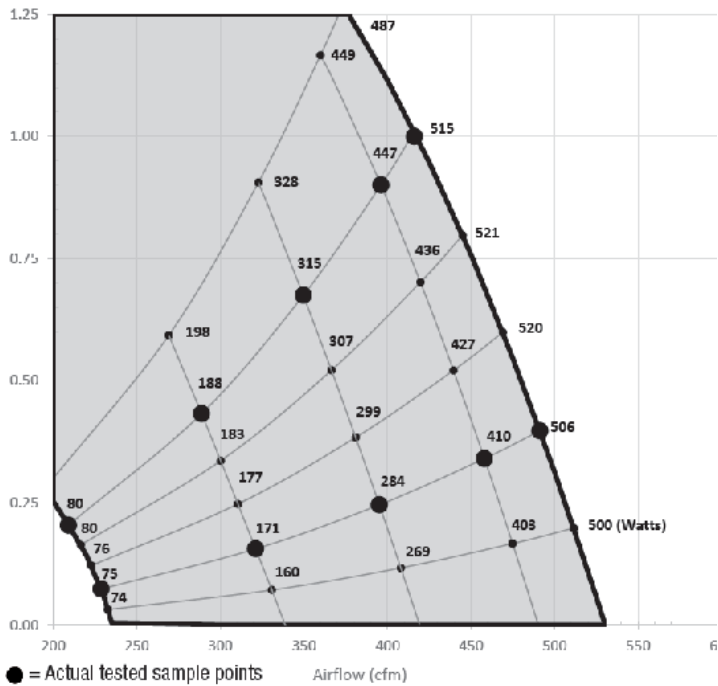
Ventilation Type: Static Plate, Heat and Humidity Transfer					
Typical Airflow Range: 200-530 CFM					
AHRI 1060 Certified Core: One L85-G5					
Motors: One, 0.5 HP, Direct Drive EC blower/motor package					
V	Hz	Phase	FLA	Min. Cir. Amps	Max. Overcurrent Protection Device
115	60	Single	8.1	10.1	15
208-230	60	Single	4.8	6.0	15
Standard Features: Non-fused disconnect 24 VAC transformer/relay package Cross-core differential pressure ports					
Filters: Two total, MERV 8, 2" pleated, 14" x 20" nominal size					
Weight: 140 lbs (unit), 250 lbs (Shipping)					
Shipping Dimensions: 62" L x 42" W x 22" H					

## Unit Performance

Airflow CFM	ESP in H <sub>2</sub> O	Watts
229	0.07	75
321	0.16	171
395	0.25	284
458	0.34	410
491	0.40	506
209	0.20	80
289	0.43	188
350	0.67	315
396	0.90	447
416	1.00	515

Note: Watts is for the entire unit.  
Note: Airflow performance includes effect of clean, standard filter supplied with unit.

## Motor Option Operating Range

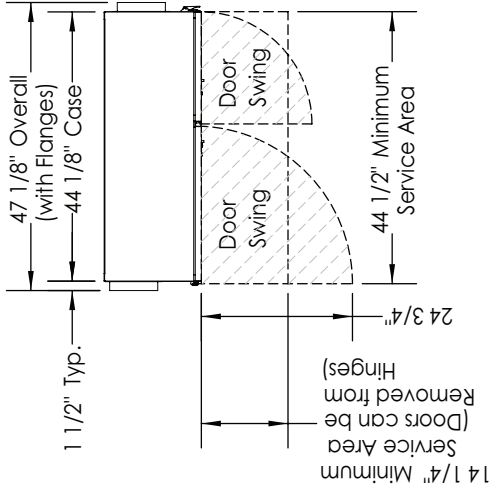


# Dimensions

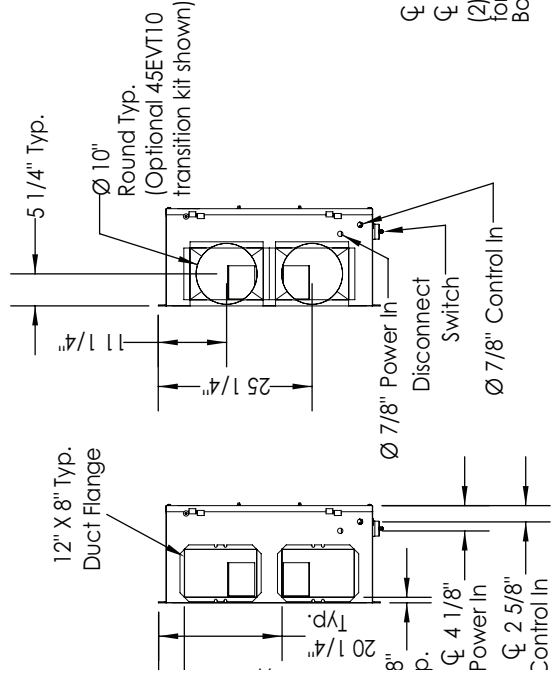
**ABBREVIATIONS**  
 EA: Exhaust Air to Outside  
 RA: Room Air to be Exhausted  
 FA: Fresh Air to Inside  
 OA: Outside Air Intake

**INSTALLATION ORIENTATION**  
 Unit may be installed in any orientation.  
 RA/EA airstream can be switched with OA/FA airstream.

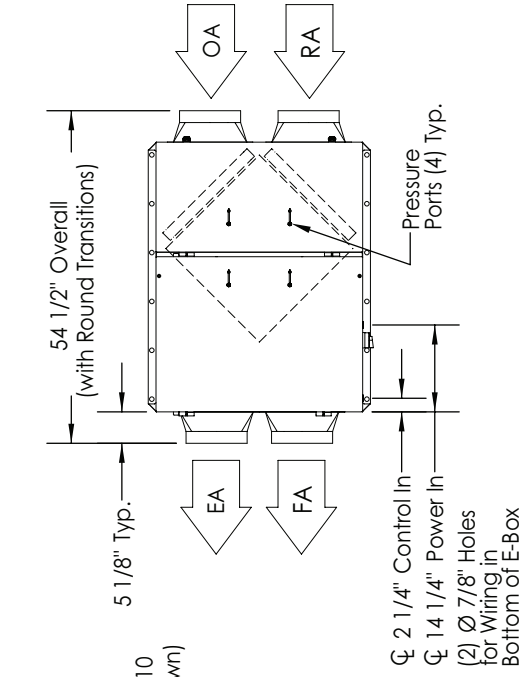
**NOTE:**  
 1. UNLESS OTHERWISE SPECIFIED, DIMENSIONS ARE ROUNDED TO THE NEAREST EIGHTH OF AN INCH.  
 2. SPECIFICATIONS MAY BE SUBJECT TO CHANGE WITHOUT NOTICE.



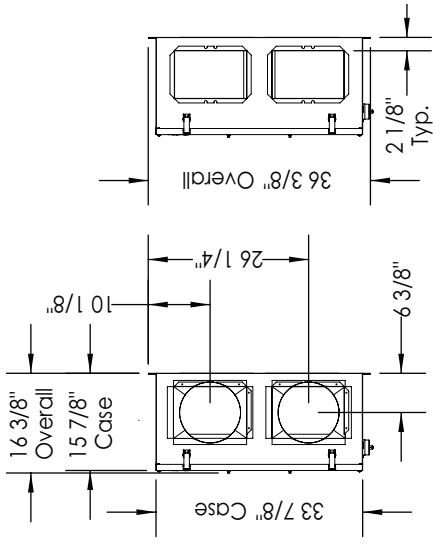
TOP VIEW



LEFT VIEW



FRONT VIEW



RIGHT VIEW